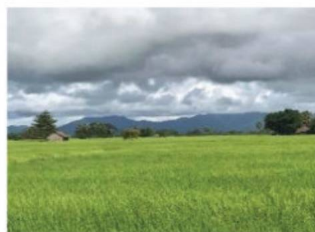
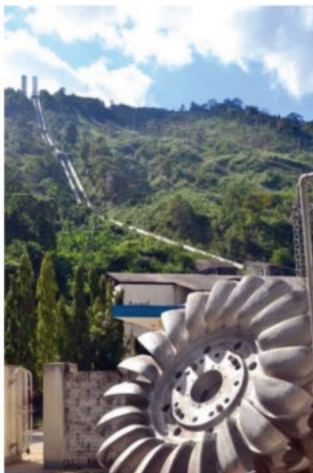




# MYANMAR KOEI INTERNATIONAL LTD.

*Consulting Engineers*



# Content

1. MKI Introduction	
i. Profile	..... 1
ii. Organization Structure	..... 1
2. Our Business	
i. Our Core Services	..... 2
ii. Our Operational Fields	..... 2
3. What We Do	
i. Energy	..... 3,4
ii. Urban & Regional Development	..... 4
iii. Transportation	..... 6
iv. Digital Technology	..... 8
v. Agriculture Development	..... 9
vi. Water	..... 9
vii. Environmental & Social	..... 11
viii. Survey & Investigation	..... 15

## Profile and Organization of Myanmar Koei International Ltd.(MKI)

### Profile

**Myanmar Koei International Ltd. (MKI)** is a subsidiary of Nippon Koei Co., Ltd. of Japan and joint ventured with Myanmar Engineering Consulting Co., Ltd. (MEC) with a paid-up capital of U\$5 million. It is registered with the Directorate of Investment and Company Administration (DICA) under the Ministry of Investment and Foreign Economic Relations (MoIFER) in Myanmar. Formed in April 2013, MKI is headed by Mr. Kazuhisa IWAMI, a Civil Engineer with over 26 years of extensive professional experience and expertise in project management, construction and design mainly of port and coastal development projects. He is ably assisted by Mr. Toru FUJINO, a Civil Engineer with over 21 years of professional experience specializing in the field of road and urban infrastructure development projects.

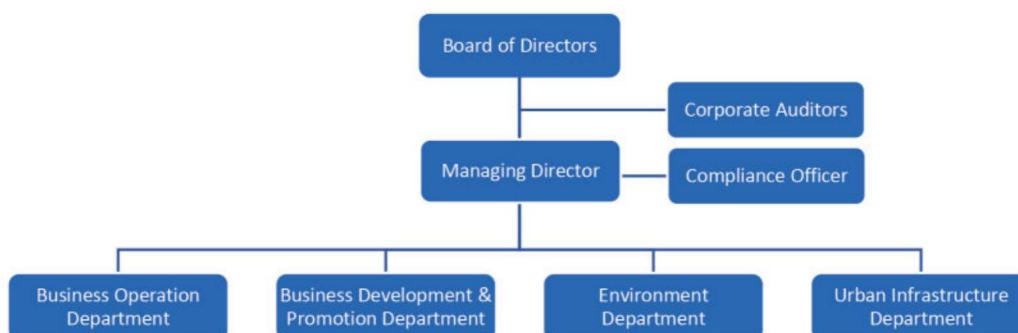


MKI is also registered with the Ministry of Natural Resources and Environmental Conservation (MoNREC) and certified to fully operate in providing environmental and social services.

MKI has been involving in implementing nationwide advisory services to funding agency and multilateral banks primarily Japan International Cooperation Agency (JICA), World Bank (WB), Asian Development Bank (ADB) and private companies as either main consultant or subconsultant in close collaboration with government administrative body (i) Ministry of Construction (MoC), (ii) Ministry of Transport and Communication (MoTC), (iii) Ministry of Electric Power (MoEP), (iv) Ministry of Agriculture, Livelihood and Irrigation (MoALI), (v) Ministry of Natural Resources and Environmental Conservation (MoNREC), Government municipal organization Yangon City Development Committee (YCDC) and Mandalay City Development Committee (MCDC).

### Organization Structure

As of June 2023, MKI has 77 full-time national staffs and counting, 44 of whom are professional engineers and environmental experts, 33 administrative and marketing support staffs, 4 Yangon-based foreign expatriates as well as full support and backing of Nippon Koei's worldwide organization. MKI also hires 55 engineers and 12 administrative national staffs as project based.



## Our Business

### Our Core Services

- Site Survey
- Feasibility Study
- Design
- Tender Assistance
- Technical Cooperation
- Project Management and Construction Supervision
- Digital Services
- Advisory Services
- Topographic Survey
- Geotechnical Investigation
- Drone Survey for Preliminary Study
- Environmental and Social Consultancy Services



### Our Operational Fields

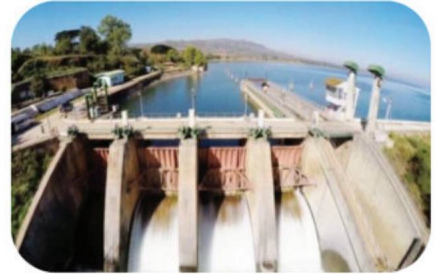
- **ENERGY**
  - Dams and Hydropower Development
  - Power Transmission and Distribution Networks
  - Rural Electrification
- **URBAN & REGIONAL DEVELOPMENT**
  - Architectural Design and Buildings
  - Industrial Parks and Special Economic Zone (SEZ)
  - Tourism Industry Development
- **TRANSPORTATION**
  - Ports
  - Roads
  - Bridges
  - Railways
  - Airport
- **DIGITAL TECHNOLOGY**
- **AGRICULTURE DEVELOPMENT**
  - Irrigation
- **WATER**
  - Water Supply and Sewerage
  - Urban Drainage
  - Solid Waste Management
- **ENVIRONMENTAL & SOCIAL**
  - Initial Environmental Examination
  - Environmental and Social Impact Assessment
  - Forestry and Natural Resources Management
- **SURVEY & INVESTIGATION**



## ENERGY

- Dams and Hydropower Development
- Power Transmission and Distribution Networks
- Rural Electrification

Access to cheap, clean energy is fundamental to the modernization and economic development of any aspiring nation. The study, design and construction of energy facilities especially hydro-electric power stations, is our core strength. We have been involved in hydropower development, the original renewable energy source, since our earliest days and among Japanese engineering firms, we have by far the largest global track record. Not only do we analyze power needs and identify optimal development plans, we also provide all feasibility analysis, design, procurement, and construction management for dams, power stations, and transmission systems.



### Selected Major Projects

■ *Power Distribution Improvement Project in Yangon Phase I*

Client : Yangon Electricity Supply Corporation (YESC)  
 Finance : Japanese ODA Loan  
 Service : Basic Design, Detailed Design, Technical Assistance, Construction Supervision

■ *Power Distribution System Improvement Project in Major Cities*

Client : Mandalay Electricity Supply Corporation (MESOC)  
 Finance : Japan International Cooperation Agency (JICA)  
 Service : Design, Technical Assistance, Construction Supervision

■ *Sub-project for Electric Power Development in Thilawa Area under Infrastructure Development Project (Phase I)*

Client : Myanma Electricity Power Enterprise (MEPE)  
 Finance : Japanese Yen Loan  
 Service : Detailed Design, Tender Assistance, Construction Supervision

■ *East Asia and Pacific (EAP) Comparative Study of the Legal and Institutional Framework for Dam Safety and Disaster Resilience*

Client : World Bank (WB)  
 Finance : World Bank (WB)  
 Service : Feasibility Study





■ *Design and Supervision Consultant for the Work Under Urban Area Power Distribution Improvement Project*

Client : Yangon Electricity Supply Corporation (YESC)

Finance : Japan International Cooperation Agency (JICA)

Service : Detailed Design, Technical Assistance, Construction Supervision

## URBAN & REGIONAL DEVELOPMENT

- Architectural Design and Buildings
- Industrial Parks and Special Economic Zone (SEZ)
- Tourism Industry Development

Economic development translates to urban expansion and infrastructure development. Modernization often occurs against a backdrop of ancient culture and rich architectural heritage. In such settings, it is essential that development plans are able to preserve the best of the past while creating modern and vibrant futures. With this awareness, we undertake urban and regional development with multi-disciplinary teams of urban and social planners, architects,

environmental experts and engineers. MKI provides a complete consulting service so when implementation is required, we are able to assist with feasibility studies, design, master plan, procurement, and construction management for all types of urban and regional infrastructure.



### Selected Major Projects

■ *Updating of Strategic Urban Development Plan of Greater Yangon Project*

Client : Yangon City Development Committee (YCDC)  
: Yangon Regional Government (YRG)

Finance : Japan International Cooperation Agency (JICA)

Service : Study



■ *Consulting Service for Yangon Urban Development Project*

Client : Yangon City Development Committee (YCDC)

Finance : Japanese Yen Loan

Service : Detailed Design, Technical Assistance, Construction Supervision



■ *Urban Development Planning Assistance in Myitkyina and Waingmaw Project*

Client : Japan International Cooperation Agency (JICA)

Finance : Japan International Cooperation Agency (JICA)

Service : Master Plan

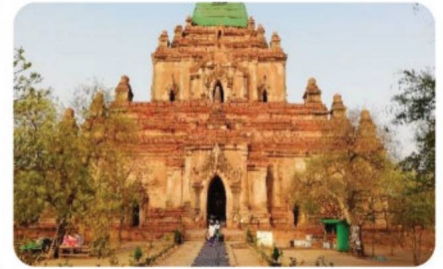


■ *Data Collection Survey on Urban Development Planning for Regional Cities (Mandalay, Patheingyi, Mawlamyine) Project*

Client : Japan International Cooperation Agency (JICA)  
 Finance : Japan International Cooperation Agency (JICA)  
 Service : Study

■ *Establishment of the Pilot Model for Regional Tourism Development in Bagan and Mandalay Project*

Client : Ministry of Hotels and Tourism (MoHT)  
 Finance : Japan International Cooperation Agency (JICA)  
 Service : Master Plan, Pre-Feasibility, Technical Cooperation, Pilot Project



■ *Design and Estimate for Jetty and SAR (Search and Rescue) and Primary Study for EIA-Wang Pong Port Project*

Client : Directorate of Water Resources and Improvement of River Systems (DWIR)  
 Finance : World Bank (WB)  
 Service : Feasibility Study, Design



■ *HIC/NWRC Building Design and Construction Under Ayeyarwaddy Integrated River Basin Management Project*

Client : Directorate of Water Resources and Improvement of River Systems (DWIR)  
 Finance : World Bank (WB)  
 Service : Detailed Design, Technical Assistance, Construction Supervision

■ *Selection for Yangon Japanese School Extension Project*

Client : Yangon Japanese School  
 Finance : Japan International Cooperation Agency (JICA)  
 Service : Tender Assistance, Construction Supervision



■ *Establishment of Technical Guideline and Assistance for the Operation of the Guidelines Concerning the Development Permission in Yangon City Development Committee*

Client : Japan International Cooperation Agency (JICA)  
 Finance : Japan International Cooperation Agency (JICA)  
 Service : Technical Assistance



## TRANSPORTATION

What We Do

- Ports
- Roads
- Bridges
- Railways
- Airport

With our global support and strength in transport engineering, MKI is the perfect choice for undertaking strategic and integrated transport planning studies. We provide international consulting services in roads, bridges, railways, airport, and port fields focused particularly towards the needs of public and private sector clients in developing and emerging countries. We offer a full range of consulting services for all stages from preliminary studies, development of master plans, to detailed design, construction supervision, and operation and maintenance.



### Selected Major Projects

#### ■ *Sub-Project Expansion of Yangon Port in Thilawa Area Phase I*

Client : Myanma Port Authority (MPA), Ministry of Transport and Communications (MoTC)

Finance : Japan International Cooperation Agency (JICA)

Service : Tender Assistance, Construction Supervision

#### ■ *Data Collection and Analysis for Port Function Expansion for Yangon Port Project*

Client : Japan International Cooperation Agency (JICA)

Finance : Japan International Cooperation Agency (JICA)

Service : Study

#### ■ *Feasibility Study for the Construction of New International Port Near Mawlamyine*

Client : Myanma Port Authority (MPA), Ministry of Transport and Communications (MoTC)

Finance : Myanmar Government's fund

Service : Data Collection and Analysis, Logistic and Cargo Demand Forecast, Natural Condition Survey (land/water), Navigation Channel Investigation, Preliminary Design, Phase Development Plan, Cost Estimation, Project Implementation Schedule, Economic and Financial Analysis, Preliminary Environmental & Social Study





■ *Construction of New Thaketo Bridge Project*

Client : Ministry of Construction (MoC)  
 Finance : Japanese Grant Aid  
 Service : Feasibility Study, Basic Design, Detailed Design, Technical Assistance, Construction Supervision



■ *Construction of Bago River Bridge Project*

Client : Ministry of Construction (MoC)  
 Finance : Japanese ODA Loan  
 Service : Feasibility Study, Detailed Design, Technical Assistance, Construction Supervision, Environmental Management Plan, Resettlement Action Plan, Capacity Development



■ *Yangon Circular Railway Line Upgrading Project*

Client : Myanmar Railways (MR)  
 Ministry of Transport and Communications (MoTC)  
 Finance : Japanese ODA Loan  
 Service : Feasibility Study, Detailed Design, Technical Assistance, Construction Supervision



■ *Thilawa Access Road Project*

Client : Ministry of Construction (MoC)  
 Finance : Japanese ODA Loan  
 Service : Detailed Design, Technical Assistance, Construction Supervision



■ *Yangon- Taikkyi Road Improvement Project*

Client : Private  
 Finance : Private  
 Service : Preliminary Design, Technical Cooperation



■ *Preparatory Study for New Hanthawaddy International Airport Project*

Client : Japan International Cooperation Agency (JICA)  
 Finance : Japan International Cooperation Agency (JICA)  
 Service : Feasibility Study



■ *Road Over Bridge and Station Development Project (YCR)*

Client : Myanmar Railways (MR)  
 Ministry of Transport and Communications (MoTC)  
 Finance : Government Fund  
 Service : Detail Design, Tender Assistance and Design Review



## DIGITAL TECHNOLOGY

- BIM/CIM Services
- Interacting Technology Services
- Virtual Reality (VR)
- Augmented Reality (AR)
- C.G Rendering Images
- C.G Animation Video (Showcase Movie)
- C.G Animation Video (Construction Steps)
- Metaverse

MKI provides various visual imagery creations as a direct and great impact on viewers. MKI's digital technology delivers seamless services from the preparation of design and 3D modelling to the creation of variety of platforms such as Virtual Reality (VR) Apps, Augmented Reality (AR) Apps, Interactive App Creation and 3D Animation Videos. As BIM/CIM has been widely applied in many countries including Japan, MKI totally supports advanced planning, design, construction through BIM/CIM. Using services for these digital technologies can significantly reduce risks and unforeseen errors in design and construction stages.

### Selected Projects

#### ■ Kiso Sansen Park

Client : Private  
 Service : 3D modelling and Render images  
 Summary : The 3D modelling and rendering work for Kiso Sansen Park involves creating a digital representation of the city and producing realistic images of its architectural and urban features. These visual representations will help stakeholders, city planners, architects, and the public to better understand and visualize future developments.



#### ■ Tokushima Airport Project

Client : Private  
 Service : 3D modelling and creating animation video  
 Summary : The scope of work involves creating a detailed storyboard, developing accurate 3D models, animating the construction sequence, enhancing visualization, and providing narration.

#### ■ Cox's Bazar Airport

Client : Private  
 Service : Conceptual design development, 3D modelling and Render images  
 Summary : The conceptual design will involve brainstorming and ideation to explore various possibilities and identify the most suitable architectural solutions. This collaborative effort will result in a well-designed airport facility that enhances the overall travel experience while considering the unique characteristics of Cox's Bazar and its surroundings.



#### ■ Thilawa Port Project Phase -1

Client : Private  
 Service : Consulting services and digital services  
 Summary : Thilawa Multipurpose International Terminal is not only large-scale but also has complex functionalities for design development.



## AGRICULTURE DEVELOPMENT

- Irrigation

Engineering solutions make an important contribution to rural development. People in developing countries must be able to use the infrastructure efficiently and effectively, maintain the structures, adopt plans to replace structures, and ultimately acquire the capacity to plan and implement infrastructure themselves and spread know-how beyond project boundaries.



### Selected Major Projects

- *Agriculture Income Improvement Project (AIIP)*

Client : Ministry of Agriculture, Livestock and Irrigation (MoALI)

Finance : Japan International Cooperation Agency (JICA)

Service : Project Management, Detailed Design, Technical Assistance, Construction

- *Strengthening of Irrigation Management Institutions for Agricultural Development Support Project (ADSP)*

Client : Ministry of Agriculture, Livestock and Irrigation (MoALI)

Finance : World Bank (WB)

Service : Technical Cooperation



## WATER

- Water Supply and Sewerage
- Urban Drainage
- Solid Waste Management

Water is a major natural resource, which must be supplied in the necessary quantities and of suitable quality to satisfy the demands of residential populations, industrial and commercial development and agriculture. Our services

include full water supply cycle from surface and groundwater hydrology, dam and river engineering at source, water treatment, transmission and distribution to sewage collection systems, wastewater treatment and treated effluent disposal and reuse.



### Selected Major Projects

- *Greater Yangon Water Supply Improvement Project Phase II*

Client : Yangon City Development Committee (YCDC)

Finance : Japan International Cooperation Agency (JICA)

Service : Detailed Design, Technical Assistance, Construction Supervision



■ *Consulting Services for Water Supply Sector under Regional Development Project for Poverty Reduction Phase II*

Client : Department of Rural Development (DRD), Ministry of Cooperatives and Rural Development (MoCRD),

Finance : Japanese Yen Loan

Service : Construction Supervision

■ *Yangon Urban Services Improvement Project*

Client : Yangon City Development Committee (YCDC)

Finance ; Asia Development Bank (ADB)

Service : Feasibility Study, Basic Design, Technical Assistance

■ *Mandalay Urban Services Improvement Project- Project Implementation Support*

Client : Mandalay City Development Committee (MCDC)

Finance : Asia Development Bank (ADB)

Service : Detailed Design, Technical Assistance, Construction Supervision



■ *Yangon Sewerage System Development Project*

Client : Yangon City Development Committee (YCDC)

Finance : Japan International Cooperation Agency (JICA)

Service : Detailed Design, Tender Assistance, Construction Supervision, Environmental and Social Safeguard, Technology Transfer

■ *Data Collection Survey on Yangon Drainage*

Client : Japan International Cooperation Agency (JICA)

Finance : Japan International Cooperation Agency (JICA)

Service : Study

■ *Construction of Additional Equalization Pond Project*

Client : Golden Dowa Eco-System Myanmar Co., Ltd

Finance : Private

Service : Preparation of Drawings and Construction



## ENVIRONMENTAL & SOCIAL

- Strategic Environmental Assessment (SEA)
- Environmental and Social Impact Assessment (ESIA)
- Environmental and Social Due Diligence
- Environment, Health and Safety Management and Compliance
- Environmental Monitoring (water, air, noise and vibration, indoor air quality and indoor noise, soil, etc.)
- Climate Risk Assessment and Adaptation Planning
- Forestry and Natural Resource Management
- Biodiversity and Ecological Management
- Solid Waste Management
- Involuntary Resettlement and Livelihood Restoration
- Public and Stakeholder Engagement
- Water, Sanitation and Hygiene (WASH)
- Renewable Energy
- Geographic Information System (GIS), Remote Sensing (RS) and Artificial Intelligence (AI)



Due to increased awareness of environmental and climate change issues, environmental protection laws and regulations become stringent and projects require to comply with the standards for environmental protection. We offer services to ensure projects deliver positive outcomes for the environment and all stakeholders. Our blend of engineering, environmental, and institutional experts can provide concrete and innovative solutions to address the salient issues impacting the environment and climate today.



### Selected Major Projects

#### ■ *Environmental and Social Consideration on Industrial Complex in Yangon Region*

Client : Private

Finance : Private

Service : Preparation of environmental and social management system, environmental and social sub management plans, supplemental ESIA and supplemental action plan on relocated households in accordance with International Finance Corporation (IFC) Performance Standards.

#### ■ *EIA Study and Stakeholder Engagement Plan for Smart & Eco City Development in Yangon Region*

Client : Private

Finance : Private

Service : EIA study including sub management plans and environmental baseline monitoring survey, preparation of Stakeholder Engagement Plan, facilitation of stakeholder engagement activities and capacity development of national staff in the project in environmental and social consideration.



*Review on EIA and Resettlement Action Plan (RAP) Study for  
B Peripheral Ring Road in India*

Client : Nippon Koei (NK)

Finance : Japan International Cooperation Agency (JICA)

Service : Review and analyse EIA and Resettlement Action Plan (RAP) Report in accordance with environmental checklists of JICA Environmental and Social Guidelines for road, World Bank Environmental and Social Standards (ESS 1: Assessment and Management of Environmental and Social Risks and Impact and ESS 5: Land Acquisition, Restrictions on Land Use and Involuntary Resettlement) and EIA guidance manual for highway in India, proposing additional studies for improvement and preparation of review reports based on review results.

■ *Environmental and Social Consideration on Greater Yangon Water Supply Improvement Project (Phase II)*

Client : Private

Finance : Japan International Cooperation Agency (JICA)

Service : Environmental Impact Assessment study on construction of water treatment plant, water transmission pipeline and service reservoirs covering preparation of scoping report, EIA investigation and preparation of EIA report to submit to Environmental Conservation Department (ECD) and preparation of Resettlement Action Plan by conducting asset inventory survey, socio-economic survey, market price survey on temporary structures.

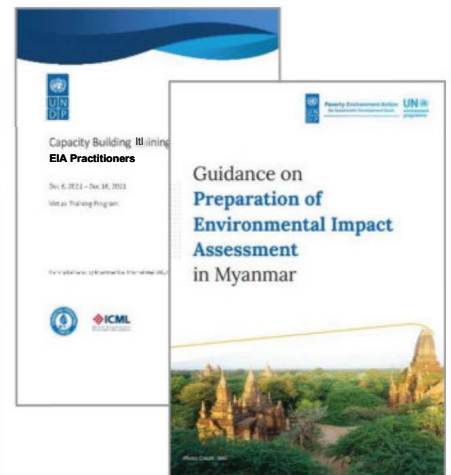


■ *Capacity Building Training on Preparation of Environmental Impact Assessment Reports*

Client : United Nations Development Programme (UNDP)

Finance : United Nations Development Programme (UNDP)

Service : Development of the 'Guidance on Preparation of Environmental Impact Assessment in Myanmar' and Capacity Building Training for EIA Practitioners in Myanmar.



a *Strategic Environmental Impact Assessment of Aquaculture for  
Nurturing Green Aquaculture (NGA) Myanmar*

Client : INGO

Finance : INGO

Service : Examination of the chemical properties of wastewater effluent from fish ponds, Estimation of carbon footprint generated by target fish ponds and assessment of impacts of aquaculture on the ecosystem of the Nurturing Green Aquaculture (NGA) Myanmar target areas.



**a Environmental and Social Good Practices Guidelines for Natural Rubber Processing Factories in Myanmar**

Client : INGO  
 Finance : INGO  
 Service : Preparation of environmental and social screening list, preparation of environmental and social good practices guidelines by conducting consultative meetings with rubber farmers and factory owners in Mon, Kayin and Tanintharyi to discuss site-specific environmental and

social issues and providing technical assistance to rubber farmers and factory owners about mitigation strategies for negative environmental and social impacts according to IFC's Environmental, Health and Safety (EHS) Guidelines for Perennial Crop Production (2016).

**B Climate Risk Assessment and Climate and Disaster Resilience Guidance for Climate Resilient Water, Sanitation and Hygiene (WASH) Services for States/Regions in Myanmar**

Client : United Nations Children's Fund (UNICEF)  
 Finance : United Nations Children's Fund (UNICEF)  
 Service : Climate Change Risk Assessment, Climate Projections and Identification of Climate-Resilient WASH Services for Chauk Township, Bogale Township and Pinlaung Township.



**■ Environmental-DNA (e-DNA)**

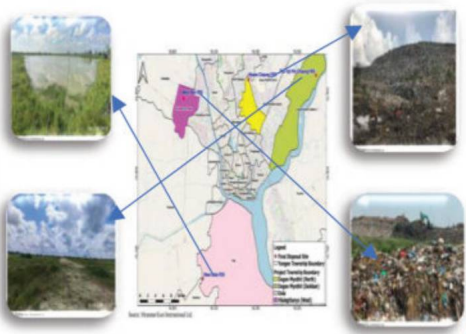
Client : NK Research and Development (R&D) Center  
 Finance : NK Research and Development (R&D) Center  
 Service : Collection of information (Previous e-DNA study in Myanmar, experience of getting an approval for exporting e-DNA samples to overseas countries and list of laboratories which can analyse the e-DNA samples in Myanmar) from desk study and by inquiring to related organizations and laboratories.



**■ Enabling Access to Off-grid Renewable Energy and Energy efficient Solutions and Entrepreneurial Skill Development in Mon State**

Client : United Nations Development Programme (UNDP)  
 Finance : United Nations Development Programme (UNDP)  
 Service : Supporting UNDP in procurement of Solar Home System (SHS) and energy efficient cookstoves, Identifying SHS and energy efficient cookstoves suppliers in Myanmar, Facilitation on provision of an access to SHS and energy efficient cookstoves to beneficiaries in unelectrified areas and Capacity development on entrepreneurial skills, financial management skills (bookkeeping) and awareness raising in green business development to target beneficiaries.





■ **Strategic Environmental Assessment (SEA) of Solid Waste Management System in Yangon**  
 Client : Nippon Koei (NK)  
 Finance : Japan International Cooperation Agency (JICA)  
 Service : Collection of information about development projects which employ SEA approach in Myanmar, scoping and preparation of Terms of Reference (TOR) for baseline survey, assessment of social and environmental impacts, preparation of proposed mitigation measures and preparation of environmental management plan.

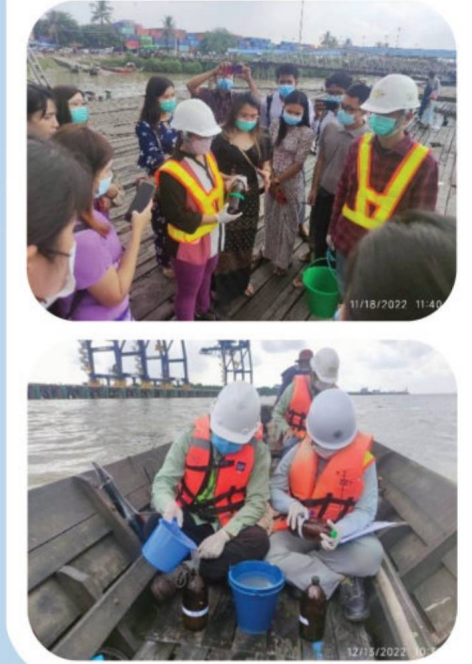
**a Study on Measures to improve Industrial Waste Management utilizing Digital Transformation (DX) for Waste Management & Waste Re-use for Cement Production**

Client : Nippon Koei (NK)  
 Finance : Ministry of the Environment Japan (MoEJ)  
 Service : Exploring the feasibility of waste utilization as raw material and fuel at a specific cement facility in Myanmar and study on activities of Smart Waste Management System.



**a Technical Support Work for the Water Environment Partnership in Asia (WEPA) Action Program in Myanmar which aims to support establishing Surface Water Quality Standards including Rivers, Lakes and Marine Water**

Client : Nippon Koei (NK)  
 Finance : Ministry of the Environment Japan (MoEJ)  
 Service : Technical support to develop National Surface Water Quality Standards (NSWQS) in Myanmar by doing analysis of collected ambient water quality data, investigating analytical capacity of laboratories in Myanmar, reviewing water quality standards of other countries (Japan, Thailand, Vietnam), developing official water quality analysis methods, preparing reference documents, and conducting capacity building trainings (theoretical trainings, On-the-job trainings and workshops) for water quality monitoring and water use classification.



■ **Study on Environmental Impact Assessment Coordination Promotion Project in Asia**  
 Client : Nippon Koei (NK)  
 Finance : Ministry of the Environment Japan (MoEJ)  
 Service : Comparative study on the environmental impact assessment systems and operations of various countries in the Asian Region, providing suggestions and lessons learnt from other countries' practices and implementation of technical training related to the EIA system.



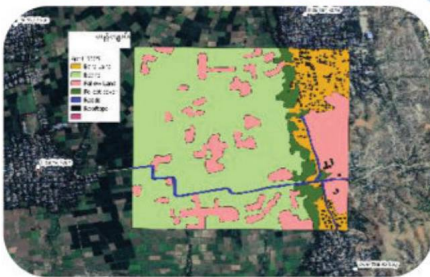
■ *Environmental Monitoring Services for Thilawa Special Economic Zone, in Yangon, Myanmar*

Client : Private  
 Finance : Private  
 Service : Environmental monitoring on air, water, water flow rate, noise, vibration, and traffic volume, data analysis, and report preparation.



■ *Environmental Monitoring Services for the Operation of Port Terminal in Thilawa Area, Yangon, Myanmar*

Client : Private  
 Finance : Private  
 Service : Environmental monitoring on air, water, noise and vibration and sediment, site inspection and preparation of biannual Environmental Monitoring (EMoP) reports to submit to ECD in MoNREC.



■ *Remote Sensing and Land Classification Research Services for Relationship between Electricity Demand and Land Uses in Myanmar*

Client : INGO  
 Finance : INGO  
 Service : Study on changes in land use (Natural features, Rooftops, Roads, Crops) and Identify correlation between changes in land use and electrification.

## SURVEY & INVESTIGATION

- Topographic Survey
- Geotechnical Investigation
- Drone Survey for Preliminary Study

In order to ensure quality and consistency with the design team, MKI possesses a drone and other equipment for survey and investigation and organized its own survey and investigation team MKI has conducted many survey and investigation services including general topographic mapping, 3D mapping by drone, and geotechnical investigation.



### Selected Projects

■ *Topographic Utilities Surveys, and Geological Investigation for Myoma Kyaung Road, Pyay Road Bridge and Hledan Road*

Client : Myanmar Railways (MR)  
 Finance : Myanmar Railways (MR)  
 Service : Survey



■ *Topographic & Utilities Survey and Geological Investigations for Baho Road Bridge*

Client : Myanmar Railways (MR)  
 Finance : Myanmar Railways (MR)  
 Service : Survey

## MYANMAR KOEI INTERNATIONAL LTD

Address : No.36/A, 1st Floor, Grand Pho Sein Condominium, Pho Secin Road,  
Tamwe Township, Yangon, Myanmar

Tel/Fax : +95 (9) 75010 5158, +95 (1) 548814

Email : [info@myanmar-koei.com](mailto:info@myanmar-koei.com)

Website : [www.myanmar-koei.com](http://www.myanmar-koei.com)



06/2023