



MYANMAR KOEI INTERNATIONAL LTD.
Consulting Engineers



Environmental and Social Consultancy Services

Capability Statement

MYANMAR KOEI INTERNATIONAL LTD.
No. 36A, 1st Floor, Grand Pho Sein Condo,
Pho Sein Road, Tamwe Township,
Yangon, Myanmar

Telefax: +95 (9) 750105158
Email: info@myanmar-koei.com
www.myanmar-koei.com



CONTENTS

COMPANY PROFILE AND ORGANIZATION	1
MYANMAR KOEI INTERNATIONAL CAPABILITIES	4
CORE ENVIRONMENTAL EXPERTS	8
SELECTION OF ENVIRONMENTAL AND SOCIAL PROJECTS	11



COMPANY PROFILE AND ORGANIZATION

THE NIPPON KOEI GROUP

The Nippon Koei Group is comprised of Nippon Koei Co., Ltd. and its administrative network of 46 branch offices, liaison offices and subsidiary offices throughout the world, which include Myanmar Koei International Ltd. (MKI). Nippon Koei is the oldest independent consulting firm in Japan, and is the leading international engineering consultant in terms of size and turnover of services. Since its establishment in 1946, Nippon Koei has continuously been providing consulting services for economic development projects and has worked on over 5,000 projects in 160 countries in Asia, Africa, Middle East, Eastern Europe, Commonwealth of Independent States, Central and South America and the Caribbean, and Oceania and the Pacific. It is noteworthy that Nippon Koei has focused its consultancy services in developing countries in Southeast Asia, specifically in the Philippines, Indonesia, Vietnam, Thailand, Cambodia, and Myanmar, as well as in island countries in the Pacific coast including Papua New Guinea, Palau, Timor Leste, and the Federated States of Micronesia.

Nippon Koei is particularly strong in engineering and project implementation/management services and coordination of multi-sector infrastructure project. With more than seventy years of experience in conducting feasibility studies, implementation of development plans and detailed engineering designs, supervision for the construction, improvement, and rehabilitation various infrastructures worldwide, Nippon Koei has gained a reputation for its quality services in investigation and planning, including financial arrangements of public-private partnership (PPP), official development assistance (ODA), and contractual arrangements such as EPC and turnkey projects.

Nippon Koei has an administrative network of 34 branch offices, liaison offices and subsidiary offices throughout the world. In addition, we typically operate more than fifty project offices all over the world.



Myanmar Koei International Ltd. (MKI)

Myanmar Koei International Ltd (MKI) was established in 2013 and registered with the Ministry of Planning and Economic Development. MKI is a subsidiary of Nippon Koei Group with the main objective of strengthening the organization's presence in the Greater Mekong Subregion, as well as to help contribute to the overall growth of Myanmar while the country was moving toward an era of political reform and economic liberalization. MKI is committed to provide its clients with the unique combination of international expertise and focused, relevant, domestic competence required during project implementation.

As of July 2021, MKI has 86 full-time national staff, 50 of whom are engineers and environmental experts, 36 administrative and marketing support staff, 5 Yangon-based expatriates as well as the full support and backing of Nippon Koei's worldwide organization.



MKI operates in a wide range of fields, which includes the following:

- Dams and Hydropower Development
- Power Generation, Transmission and Distribution, Rural Electrification
- Urban and Regional Development
- Agriculture and Irrigation/Rural Development
- Water Supply and Sewerage/Waste Disposal and Recycling
- Environmental and Social Impact Assessment
- Architectural Design and Buildings
- Airports, Roads, Bridges, Railways





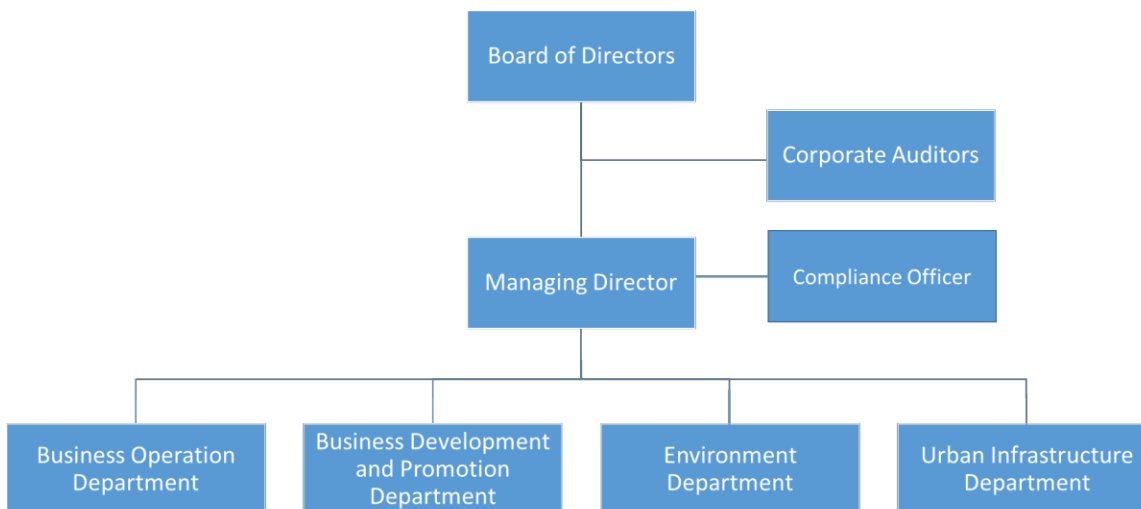
MKI Annual Turnover for the Last Five Years

<i>Fiscal Year</i>	<i>Turnover (MMK)</i>	<i>Equivalent US\$</i>
2021 – 2022 (Mini Budget)	2,846,197,498.32	\$ 1,600,786.00
2020 - 2021	6,118,128,674.00	\$ 4,041,036.00
2019 - 2020	6,051,154,934.28	\$ 4,270,399.00
2019 (Mini Budget Year)	2,749,045,841.67	\$ 1,805,696.00
2018 – 2019	5,338,889,540.18	\$ 3,594,219.00

MKI Board of Directors

<i>Name</i>	<i>Designation</i>
Ms. Ma Khine Zaw	Chairman
Mr. Hidetsugu KAWANAMI	Vice-Chairman
Mr. Kazuhisa IWAMI	Managing Director
Mr. Yasusuke KUROSAKI	Director
Mr. Myo Myint Kyaw	Director

MKI Organizational Chart



MKI CAPABILITIES

MKI ENVIRONMENT DEPARTMENT

The MKI Environment Department has a very broad experience of international environmental consultancy, in terms of both geographical variety and technical application. This breadth also applies to its client base, which includes the multilateral development banks, bilateral development institutions, international Non-Governmental Organizations (NGOs) and the private sector.

The work of MKI's environmental experts is focused on several leading sectors of the environmental consultancy field, as follows:

Environmental Impact Assessment (EIA)

Environmental Impact Assessment (EIA) is the backbone of environmental management for development projects. As the requirements of financial institutions and national legislative frameworks grow, EIA studies increase in their scope and depth. Through all its projects, MKI seeks to strike the ideal balance between development, poverty alleviation, and environmental conservation.

The Environmental Impact Assessment (EIA) study covers systematic identification and assessment of potential adverse impacts including cumulative impacts of the proposed project, business, service or activity, systematic assessment of feasible Project alternatives, and determination of appropriate measures to mitigate potential adverse impacts.

MKI supports its clients with all technical details to determine the extent of potential environmental impacts on the surrounding environment. In doing so, MKI closely coordinates with all relevant authorities of the proposed project and government bodies to ensure systematic compliance with government legislations for pollution control and environmental protection.

In addition to EIA study, MKI has very strong expertise in conduction Initial Environmental Examination (IEE) for projects which could have adverse impacts lesser than that of EIA type projects. By engaging with local communities and other stakeholders, MKI supports its clients in developing strategies to manage environmental and social impacts.

Environmental Monitoring (water, air, noise and vibration, indoor air quality and indoor noise, soil, etc.)

For any environmental study, the baseline environmental qualities of physical environmental components are an important part of the study and it is vital to identify the components that may be potentially affected by proposed projects. In many EIA and IEE studies, MKI conducted environmental baseline studies such as monitoring of water quality, soil quality, air quality, noise and vibration, indoor air quality and indoor noise, etc.

MKI collects baseline data to ensure that existing environmental conditions of the area is well understood and to assess the possible environmental changes that could occur due to projects. MKI has national and international experts with different backgrounds for monitoring of baseline environmental qualities and its experts has worked side by side with relevant organizations and stakeholders in performing these assessments for various environmental investigation projects.





Environment, Health and Safety Management and Compliance

In recent years, Environment, Health and Safety (EHS) management has received particular attention in many industries. EHS compliance becomes an important component of environmental policy to ensure environmental protection as well as wellbeing and safety of workers. Proper implementation of EHS guidelines and requirements can protect pollution, incidents, injuries and even fatalities on project sites.

MKI has strong expertise in supporting its clients in demonstrating their compliance with regulatory requirements for Environment, Health and Safety (EHS) management and other environmental obligations they need to fulfill.



Environmental Due Diligence

Environmental due diligence is an important liability protection measure to reduce environmental risks and liabilities. It is the process of assessing properties for any potential risk of environmental contamination.

Many of MKI's environmental and social studies related to private sector projects include 'due diligence' studies to determine compliance with legal requirements, and identify potential environmental risks and liabilities. For example, MKI conducted Due Diligence for the Transfer of Rights of Tin Smelting Businesses in Thanlyin Township. MKI environmental experts identified and evaluated environmental risks and its countermeasures and recommended subsequent actions such as a detailed environmental investigation. For a real estate development company, MKI carried out due diligence not only on environmental survey procedures, but also on legal requirements and approvals required by various ministries before implementation of the project.



Strategic Environmental Assessment (SEA)

Strategic Environmental Assessment (SEA) is a process for assessing the environmental and health impacts of proposed policies, plans, or other strategic initiatives and it is mainly undertaken by proponents of a policy, plan or programme. It can inform necessary information for sound decision-making by incorporating inputs from relevant stakeholders.

Recently, MKI has provided technical services for a Strategic Environmental Impact Assessment for Aquaculture which is financed by Mercy Corps. In addition, MKI also supported JICA in conducting Strategic Environmental Assessment (SEA) for Solid Waste in Yangon Region.

Climate Risk Assessment and Adaptation Planning

Climate change is now seen as a key issue in many development projects and investors expect project developers to consider the potential impacts of climate change on project performance. In addition, governments also expect project proponents to report and disclose information about the climate change risks and how the risks will be addressed. Nowadays, understanding climate risks can help project proponents in meeting with climate-related regulations.

MKI is capable of supporting its clients in assessing climate risks and develop climate change adaptation solutions that are relevant for the purpose of projects. MKI has expertise in analysis historical climate data, climate projection models, GIS



mapping and it also has experts from diverse backgrounds to quantify climate risks.

One proven experience of MKI is the provision of service for Climate Risk Assessment and Climate and Disaster Resilience Guidance for Climate resilient WASH Services for states/regions in Myanmar which is funded by UNICEF in 2022. Through comprehensive risk assessment and impactful workshops with local communities and stakeholders, MKI supported its client with practical solutions for enhancing climate resiliency for WASH services in three townships in Myanmar.

Biodiversity and Ecological Management

International interest in ecosystems has increasingly focused on the conservation of biodiversity, particularly since the advent of the Convention on Biodiversity (CBD) in 1992. Assessment of impacts biodiversity is one of the components of a full Environmental Impact Assessment (EIA) study. Development projects that are near to ecologically sensitive areas such as forest conservation areas including biodiversity reserved areas and nature areas, they are subject to carry out impact assessment on biodiversity and important ecological features.

MKI supports its clients recognize the importance of environmental protection and ecological management. MKI has an in-house expert team specialized for biodiversity and ecological management. From 2016 to 2017, MKI provided technical assistance to ADB on Promoting Ecosystem Services and Forest Carbon Financing in Asia and the Pacific where MKI provided a Sustainable Land Management Specialist. One of the specialist's tasks is to help define current land use practices of 16 villages and analyze the pressures on supporting ecosystem, constraints and opportunities.



Public and Stakeholder Engagement

Environmental protection goals cannot be achieved alone by governments. They need support and participation from public to ensure that policy-makers have relevant local knowledge.

In many environmental studies, MKI closely cooperated with local communities to ensure that their views and concerns are taken into consideration by respective authorities through transparent public consultation meetings. In addition, MKI has strong expertise in engaging with different stakeholders including sectoral agencies, governmental and non-governmental institutions to ensure that EIA address relevant issues perceived as being important by different stakeholders and encourage project proponents to respond to different stakeholders' concerns.

Solid Waste Management

The safe disposal of solid waste is becoming more difficult as potential disposal sites are used up and environmental regulations become stricter. At the same time, the degradation of environmental quality and public health due to unmanaged and/or unregulated waste disposal becomes more apparent. MKI can provide waste management planning with the objective of improving the performance of relevant authorities or stakeholders. Recently, MKI has involved in the Project for Sustainable Planning and Improvement of Solid Waste Management in Yangon which is financed by JICA.

MKI also provides consulting services for the Management System for Operation of Solid Waste Management Facilities in Thilawa SEZ Zone A. The services for this project include technical assistance in the establishment of laboratory analysis on water quality, soil quality, and the subsequent development of quality control system for these analyses. MKI's experts provide support and technical advice on the implementation of EMP, the preparation of EMoP, laboratory management as well as capacity building and technical transfer programs to involved parties and communities.





Geographic Information System (GIS), Remote Sensing (RS) and Artificial Intelligence (AI)

Remote Sensing (RS) and Geographic Information System (GIS) plays an important role in environmental/ social planning and management, contributing significantly in decision-making processes. MKI has been incorporating such GIS and RS technologies in identifying restoration area based on ecosystem service, evaluating and monitoring environmental risks and hazards in its consulting services. Additionally, MKI has integrated an advanced technology of Artificial Intelligence (AI) in the area of Remote Sensing and offers a variety of research services from automated image analysis for land use/ land cover classification, to predictive analysis in developing AI models that predict changes in environmental factors based on historical data.

One of such projects MKI conducted is the remote sensing and land classification research service studying the impact of electricity on land use at the village level in Myanmar, with machine learning models embedded in the land classification approach.

Signatory of the UN Global Compact

We are proud to announce that MKI has become a participant of the United Nations Global Compact (UNGC), the world's largest corporate sustainability initiative on 14 May, 2024. The UNGC is a voluntary initiative based on CEO commitments to implement ten (10) universal sustainability principles and take steps to support UN goals. Becoming a participant of the UNGC underscores our unwavering commitment to ethical business practices and sustainability in four key areas: human rights, labor, environment, and anti-corruption, both in the projects we are involved in and within our management, to create a sustainable society through our business.





Core Environmental and Social Experts



Mr. Tomoo AOKI (Japanese) is a Senior Environmental and Social Expert with specialties in the field of involuntary resettlement planning, environmental impact assessment, environmental service valuation, nature conservation and protected area management. He obtained his master degree in Civil Engineering Planning at the Tottori University in 1993. He is also a member of Japan Society of Civil Engineering, Society for Environmental Economics and Policy Studies, Japan and Japan Association for Planning and Public Management.

Mr. Aoki has over 28 years of professional experience in the studies and engineering on environmental and social fields including ESIA and environmental management projects. In Myanmar, he works as a team leader or an environmental and social expert in various projects in Myanmar such as JICA Technical Assistance for Institutional Strengthening in Responsible Business and Investment in Myanmar, JICA Review Study of Environmental and Social Considerations (ESC) Implementation Status and Design Study and Construction Management Consultancy Services for Tender Assistance and Management of the Works under Yangon Circular Railway Line Upgrading Project, etc. He has prepared Resettlement Work Plan (RWP) for Thilawa SEZ and has implemented RWP according to JICA Guidelines for Environmental and Social Consideration under JICA project of Technical Assistance for Institutional Strengthening in Responsible Business and Investment in Myanmar.

In addition, he is involved in Wetland Ecological Management Project and Study for Strengthening Safeguard, in Southeast Asia (Myanmar, the Philippines, Indonesia). Moreover, he has an experience of working in Vietnam, Bangladesh, Iran, India, Sri Lanka, Pakistan and in Japan. Mr. Tomoo AOKI is currently the General Manager of MKI Environment Department.



MR. Hiroshi NAKANO (Japanese) is an Environmental and Social Expert by profession and passionate about environmental and social consideration. He earned both Master's and Bachelor's degrees specializing in Life and Bioresource Sciences in 2009 and 2007, respectively from Tottori University, Japan. He is a certified member of Professional Engineer, Environmental Assessment & Management for Construction of Civil Engineer in Japan since 2014 (Registration No. 83416), as well as Pollution Control Manager (Water Quality) and Hazardous Materials Engineer.

He has over 10 years of solid professional environmental experience providing consultancy services to government ministries, private firms, Japan International Cooperation Agency (JICA) and Japan Bank for International Cooperation (JBIC) in various infrastructure projects particularly dam, power, water, road and SEZ in Southeast Asia (Myanmar, Vietnam, Indonesia), Middle East (Iran, Iraq) and Japan.

In Myanmar, Mr. Nakano has managed key infrastructure projects specifically Thilawa Special Economic Zone as Environmental and Social Expert in the formulation and execution of Operation Plan, Baseline Survey, Environmental Impact Assessment (EIA), Environment Management Plan (EMP), Environment Monitoring Plan (EMoP) in consultation and liaising with Myanmar government ministries, primarily the Ministry of Natural Resource and Environmental Conservation (MONREC) and the Ministry of Construction (MOC) and private sector clients. Prior to joining Myanmar team permanently, he was involved in Development of Master Plan for Environmental Conservation and Management of Southern Coastal Area as Water Pollution Management Expert in Iran and its neighboring country Iraq for Hartha Thermal Power Station Rehabilitation Project as Environmental Expert.

To name a few of significant involvement in Vietnam, he was Pollution Source Inventory Expert and Capacity Development Expert for Strengthening Capacity of Water Management in River Basin and Feasibility Study project on Development of Energy Saving Plan respectively. Similarly, he was also an International Social Consideration Expert for the Advisory Service for Social Consideration of Industrial Park Development Project. Additionally, Preliminary Study for Sunda Strait Bridge Project in Indonesia was also undertaken as Socio-environmental consideration expert. He initially worked as EIA expert for construction and redevelopment projects of four dams and developing Environmental and Social Considerations Manual Related to Water Environment project as Socio-Environmental Consideration Engineer in Japan. Mr. Hiroshi NAKANO is currently the Deputy General Manager of MKI Environment Department.



Ms. Wah Wah Han Su Yin (Burmese) earned her Baccalaureate Degree in Civil Engineering from Yangon Technological University. She is a former member of the academe and used to teach Marine Engineering subjects with the Myanmar Maritime University. After completing her Master's Degree in Civil and Environmental Engineering at Saitama University, Japan, she focused her expertise towards Environment and Social Development. She started by managing development projects for the Japan International Cooperation Agency (JICA) and has been exposed to coordinating stakeholders from grassroots level to the executives of various Ministries such as MOEE, MOC, MOALI, , the Ministry of Health, and the Ministry of Commerce, among others. Her expertise is further fortified by her continuous engagements in the development of the Thilawa SEZ, as well as with other private companies, particularly in the conduct of related surveys and investigations around the regions and cities of Myanmar.

Ms. Wah Wah is likewise an expert in Geographic Information System (GIS). She is actively involved in realizing the advocacy of Nippon Koei Co., Ltd. and the Myanmar Engineering Society in local youth and skills development through the conduct of the Nippon Koei-Geographic Information Analysis System (NK-GIAS) Course, wherein she serves as among its trainers. Developed by Nippon Koei itself, the NK-GIAS software covers geo-referencing, spatial interpolation, coordinate system information, handling of ASTER data and satellite imagery analysis. Ms. Wah Wah is currently the Acting General Manager of MKI Environment Department.



Mr. Khin Maung Thane (Burmese) is an Environmental Engineer and a Health and Safety Expert by profession. He earned his Baccalaureate Degree in Physics at the University of Yangon, and has certifications in Geographic Information Analysis, Safe Entry & Work in Confined Spaces, Workplace Safety and Health, Quality Management System (ISO 9001:2015), and Environmental Management System (ISO 14001:2015). He also earned his Certificate in Environmental Control from Singapore Environment Institute, and is a licensed Environmental Control Officer.

Being one of MKI's Environmental Department Managers, Mr. Khin Maung Thane is mainly responsible for the promotion of environmental projects and leading the environmental aspects of its engagements, particularly in the conduct of environmental investigations and social surveys. He also conducts special studies and provides technical advice the in the preparation of Environmental Management Plans (EMP), Initial Environmental Examinations (IEE), Environmental Impact Assessments (EIA), and environmental management monitoring reports for various projects, including, inter alia, sewerage infrastructure improvement, construction of factories and manufacturing plants, telecommunication towers, pumping stations, and roads and bridges.

Aside from being a staple in JICA's projects in Myanmar, Mr. Khin Maung Thane has provided professional services for various international clients, namely: the Japan's Ministry of Economy, Trade and Industry, and Singapore's Land Transport Authority (Ministry of Transport), Housing Development Board (Ministry of National Development), and Public Utilities Board (Ministry of the Environment and Water Resources). Mr. Khin Maung Thane is currently the Deputy Acting General Manager of MKI Environment Department.



Dr. Phyo Thu Aung (Burmese) entered the academe right after earning his Baccalaureate Degree in Chemical Engineering. He taught with the Fuel and Propellant Department of the Myanmar Aerospace Engineering University before finally focusing on managing the environment and social aspects of various infrastructure projects in Myanmar. He is one of MKI's current senior specialists, and is responsible for supervising the environmental and social surveys, preparing assessment reports, facilitating public consultation meetings, and reviewing technical plans and studies, inter alia. Being an Environmental, Social, Health and Safety Expert by profession, Mr. Phyo Thu Aung recently conducted studies for the Yangon Elevated Expressway Project and various industries in the Thilawa SEZ. He is currently engaged with the

Social and Environmental Study (IEE/EMP) for Water Supply Sector under Regional Development Project for Poverty Reduction (Phase II).

Dr. Phyo Thu Aung earned his Master's Degree in Chemical Engineering from Yangon Technological University and his Doctorate Degree in Chemical Engineering from Mandalay Technological University. He is likewise a member of the



Myanmar Engineer Society (No. 029790-M/CH) and the Myanmar Association of Chemical Engineering, a registered Transitional Consultant of the Ministry of Natural Resources & Environmental Conservation, and a registered Senior Engineer of the Myanmar Engineering Council. Dr. Phyo Thu Aung is currently the Technical Manager of MKI Environment Department.



Utilizing her knowledge of biotechnology as springboard, Dr. Ni Lar Wynn (Burmese) was able to penetrate the various environmental-related aspects of development projects in Myanmar, particularly in the Thilawa Special Economic Zone (SEZ) area. After teaching Microbiology at the Department of Biotechnology, Ministry of Science and Technology. Dr. Ni Lar Wynn undertook the Wastewater Management and Treatment Project along the Zaw Gyi River with the Ministry of Education, which developed a scheme that reduced the environment-related impact of the drainage system to Kyauk-se Township. She thereafter joined MKI and assumed Environmental Expert post for various projects, inter alia, the Preparatory Survey for Kyaukse Gas Combined- Cycle Power Plant Construction Project, the Environmental Monitoring Service for Myanmar Japan Thilawa Development Ltd., and the Capacity Development on the Basic Water Environment Management and EIA System in Myanmar.

Dr. Ni Lar Wynn earned her Master's Degree in Molecular Biotechnology at the Mandalay Technological University and her Doctorate Degree in Environmental Engineering at the University of the Philippines.



Dr. Tin Mar Lwin (Burmese) is an Environmental, Social and Resettlement Expert with experience in performing environmental and social survey, household survey, data collection and analysis, impact assessment, management of public consultation process and the preparation of training materials for large infrastructure development projects in Myanmar.

She is the National Expert (Environmental and Social) for the Infrastructure Development Project in Thilawa Area Phase II (Access Road) as well as for the Detailed Design Project for the Bago River Bridge Construction, both projects funded by JICA. For the latter project, she worked as the International Expert in the preparation of HIV/AIDS prevention program.

For the project Survey on Legal System, Institutions and Implementation of Involuntary Resettlement, also financed by JICA, she provided assistance in the preparation of the resettlement action plan including technical tasks such as field survey, socioeconomic survey, site selection, site preparation and relocation, conducted consultations with project affected households, collated national laws on land acquisition and resettlement, to name a few.

A Civil Engineer by profession, Dr Tin Mar Lwin holds a Master Degree in Civil Engineering from Hmawbi Technological University which she completed in 2011. In 2015, she completed her doctorate degree in Water Resources Engineering from the Yangon Technological University. Dr. Tin Mar Lwin is currently the Assistant Manager of MKI Environment Department.



Ms. Aye Aye Aung (Burmese) is one of MKI's resident Environmental and Social Experts. She earned her Baccalaureate Degree in Chemical Engineering at the Yangon Technology University, and her Master's Degree in Environmental Engineering at the National University of Singapore. She is likewise a registered Environmental Control Officer (No. S1573X), having finished the Certification Course for Environmental Control Officers at the Singapore Environment Institute. Among her notable engagements as Environment Control Officer and Environmental-Social Expert are Sentosa Gateway Tunnel Project in Singapore, the Kyaikkasan Development Project and various socio-environmental related assessments and monitoring projects for JICA and private companies. She is currently the Manager of MKI's Environment Department.



Selection of Environmental and Social Projects

Environmental Impact Assessment

No.	Project	Client/ Finance	Period	Services	Sector
1.	Consultancy Services for Environmental Impact Assessment Study on Construction of a Coal Fired Plant in Yangon Region	Private	09/2013-03/2014	Environmental and Social Impact Assessment, Environmental Management Plan, Environmental Monitoring Plan, Public Consultation Meetings	Generation of Electricity from a coal fired power plant
2.	Sub-project for Electric Power Development in Thilawa Area under Infrastructure Development Project in Thilawa Area (Phase I)	Gov. of Myanmar/ Japanese ODA Loan	12/2013-04/2017	Detailed Design, Tender Assistance, Construction Supervision, Environmental and Social Impact Assessment	Gas fired Power Plant, Transmission Substation, Transmission & Distribution Lines and Gas Pipeline
3.	Preliminary EIA and SIA for Thermal Cutoff Factory and Transformer Factory in Myanmar (Factory IEE)	Private	01/2014-02/2014	Environmental and Social Impact Assessment, Environmental Management Plan	Electrical equipment manufacturing industry
4.	Technical Consultancy Services for Environmental Impact Assessment Study on Yangon International Airport Expansion Project	Private	02/2014-08/2014	Environmental and Social Impact Assessment	Expansion of Yangon International Airport
5.	Preparing the Power Transmission and Distribution Improvement Project (National Environmental Specialist and National Resettlement Specialist)	ADB	09/2013 - 02/2015	Initial Environmental Examination, Environmental Management Plan, Resettlement Plan, Capacity Building	Transmission & Distribution Lines
6.	EIA Study for Project on Construction of Solid Waste Management Facilities in the Thilawa SEZ	Private	06/2014-02/2015	Environmental and Social Impact Assessment, Public Consultation Meetings	Solid Waste Management Facilities in Thilawa SEZ
7.	Environmental Impact Assessment for Electric Power Sector	JICA	03/2014-10/2014	Environmental and Social Impact Assessment S	Power sector
8.	Pre-Environmental Due Diligence for Transfer of Rights of Tin Smelting Business in Thanlyin Township	Private	08/2014-02/2015	Feasibility Study, Due Diligence	Tin smelting Industry
9.	Environmental Investigation for Coal Fired Power Plant in Mon State	Private	10/2014-01/2015	Environmental and Social Investigation, Survey, Due Diligence	Coal fired Power Plant
10.	Project for the Improvement of the Capacity of Thilawa SEZ Management Committee	JICA	09/2014-09/2019	Environmental related Technical Assistance, Capacity Building	Environment Section in Thilawa SEZ One Stop Service Center (OSSC)
11.	Preparatory Survey on Distribution System Improvement Project in Main Cities	JICA	11/2014-06/2015	Environmental and Social Consideration in Feasibility Study	Distribution Substation and Distribution Lines
12.	IEE Study for Construction and Operation of Noodle-Making Factory in Thilawa SEZ	Private	02/2015-04/2015	Initial Environmental Examination, Survey, Due Diligence	Manufacturing-Food Industry, Environment, Social Infrastructure, Urban Sanitation



No.	Project	Client/ Finance	Period	Services	Sector
13.	Due Diligence Review of Environmental Conservation and Prevention Plan (ECP) for Manufacturing Factory	Private	Feb-15	Due Diligence Review	Textile Manufacturing Industry
14.	EIA Study for Construction and Operation of Port Terminal in Yangon Region	Private	07/2015-01/2016	Environmental Impact Assessment	Transportation, Ports/Harbors, Environment
15.	Environment, Social & Health Impact Assessment Study (Phase I) for Gas Fired Plant Project in Myanmar	Private	07/2015-08/2015	Environmental, Social and Health Impact Assessment	Gas fired Power Plant
16.	Design, Bid Assistance and Supervision of Infrastructure Development Project in Thilawa Area Phase II	Gov. of Myanmar/ Japanese ODA Loan	10/2015-04/2019	Detailed Design, Tender Assistance, Construction Supervision, Environmental and Social Impact Assessment, Social Survey, Public Consultation Meetings	Transportation, Road, Urban Development
17.	Communication Network Improvement Project	Gov. of Myanmar/ Japanese ODA Loan	12/2013-04/2017	Detailed Design, Tender Assistance, Construction Supervision, Environmental and Social Impact Assessment	Public Services, Telecommunication, Urban Development
18.	500kV National Power Transmission Line	Gov. of Myanmar	05/2016-Present	Implementation of Environmental Management Plan and Environmental Monitoring Plan during Construction	Electricity Transmission and Substations
19.	EIA Study for Thilawa SEZ Zone B	Private	11/2015-12/2015, 02/2016-03/2016	Environmental Impact Assessment	Environment, Urban Planning, Public Services, Social Infrastructure
20.	Supplemental Survey for the Project for Construction of Bago River Bridge	JICA	02/2016-05/2016	Design, Survey, Initial Environmental Examination	Transportation, Road, Urban Planning
21.	Sub-Project for Expansion of Yangon Port in Thilawa Area (Phase I) Under Infrastructure Development Project in Thilawa Area (Phase I)	Gov. of Myanmar/ Japanese ODA	05/2016-03/2017	Tender Assistance, Construction Supervision	Transportation, Ports/Harbors, Urban Development
22.	Pre-ESIA Study for MIC Application for Thilawa Port Plots 20 & 21 and Triangle Land between Plots 21 & 22	NK	10/2016-11/2016	Due Diligence	Transportation, Ports/Harbours
23.	Environmental and Social Consideration for the Construction of Bago River Bridge to connect Thaketa Township and Thanlyin Township in Yangon	Gov. of Myanmar/ Japanese ODA	09/2016-2022	Detailed Design, Construction Supervision	Transportation, Roads/Bridges, Urban Development, Urban Planning, Land Formation
24.	Environmental and Social Consideration Survey for Feasibility Study on the Improvement of Yangon City Sewerage Infrastructure in Myanmar	Private	11/2016-02/2017	Environmental Survey, Socio-Economic Survey, Preliminary Design	Sewerage, Drainage, Urban Sanitation, Public Services
25.	IEE Study for Construction and Operation of Pre-stressed High-Strength Pile Manufacturing Factory in Thilawa SEZ in Myanmar	Private	10/2016-03/2017	Initial Environmental Examination, Due Diligence Review, Environmental Impact Assessment, Environmental Management Plan	Manufacturing-Chemical Industry, Wastewater, Urban Sanitation, Environment



No.	Project	Client/ Finance	Period	Services	Sector
26.	EIA Study for Construction and Operation of Cement Factory in Thilawa SEZ	Private	10/2016-08/2017	Scoping, Due Diligence, Environmental Impact Assessment, Environmental Management Plan	Manufacturing-Cement Industry, Environment, Urban Sanitation, Public Services
27.	Mandalay Urban Services Improvement Project with ADB Loan	ADB	11/2016-09/2023	Survey, Environmental Monitoring	Water Supply, Wastewater and Drainage, Urban Development, Capacity Development
28.	Pre-ESIA on Myanmar Investment Committee (MIC) Application for Yangon New Hospital Project	Private	12/2016-2/2017	Environmental and Social Consideration, Preliminary Environmental and Social Impact Assessment, Due Diligence Review	Public Services, Social Infrastructure-Building
29.	Environmental Management Plan (EMP) Study for Operation of Instant Coffee and Tea Making Factory in Yangon Region	Private	2/2017-5/2017	Environmental Management Plan	Manufacturing-Beverage Industry, Environment
30.	Environmental Safeguard Institutional Strengthening	ADB	05/2017 - 04/2018	EIA Review, Capacity Building	Environment, Institutional Development
31.	IEE Study for Construction and Industrial Gas Manufacturing Factory in Thilawa	Private	05/2017 - 08/2017	Initial Environmental Examination	Energy, Gas, Manufacturing- Others, Environment, Urban Sanitation
32.	Environmental Management Plan (EMP) Study for Garment Factory in Shwe Pyi Thar Industrial Zone in Yangon	Private	05/2017-07/2017	Environmental Management Plan	Garment Industry
33.	Yangon-Mandalay Railway Improvement Project Phase 1	Gov. of Myanmar/ Japanese ODA	07/2017-07/2022	Environmental and Social consideration, Public Relations	Railway
34.	IEE Study on Manufacturing of PHC-Pile, RC Square Pile, Concrete Girder and Precast Panel Factory in TSEZ	Private	08/2017-02/2018	Initial Environmental Examination, Environmental Monitoring Plan	PHC-Pile, RC Square Pile, Concrete Girder and Precast Panel Manufacturing Industry
35.	IEE Study on Operation of Audio Electronic Equipment and Products Manufacturing Factory in Thilawa SEZ	Private	08/2017-02/2018	Initial Environmental Examination, Environmental Monitoring Plan	Electronic Parts Manufacturing Industry
36.	IEE Study for Construction and Operation of Cans and Beverage, and Milk Powder Manufacturing Factory in Thilawa SEZ	Private	11/2017-03/2018	Initial Environmental Examination	Beverage and Milk Powder Manufacturing Industry
37.	IEE Study for Construction and Operation of Paper Boxes and Cartons Manufacturing Factory in Thilawa SEZ	Private	11/2017-03/2018	Initial Environmental Examination	Paper Boxes and Cartons Manufacturing Industry, Environment
38.	Technical review on EMP/IEE/EIA reports which were submitted to ECD in MONREC	ECD	02/2018-12/2018	EMP/IEE/EIA Review, Capacity Building	Development of Various Projects



No.	Project	Client/ Finance	Period	Services	Sector
39.	IEE Study for Construction and Operation of Steel Towers, General Steel Fabrication and Hot-dip Galvanize Service Manufacturing Factory in Thilawa SEZ	Private	01/2018-05/2018	Initial Environmental Examination	Steel and Hot-dip galvanize manufacturing Industry
40.	Consulting service on IEE study for Operation of the existing brewery factory in Mandalay Region	Private	02/2018-06/2018	Initial Environmental Examination	Brewery manufacturing industry
41.	Yangon Circular Railway Line Upgrading	Gov. of Myanmar/ Japanese ODA	01/2018-08/2022	Environmental and Social consideration, Public Relations, Health and Safety	Railway
42.	Environmental Studies for MIC Application Preliminary IEE and Traffic Survey for Hospital Project in Yangon Region	Private	05/2018-06/2018	Screening, Traffic Survey	Development of Hospital
43.	Technical Consultant for Yangon Elevated Expressway PPP Project	IFC	05/2018-To Date	Environment and Social Considerations	Development of Elevated Expressway
44.	Environmental Management Plan (EMP) Study for Operation of the Existing Beer Factory in Pynmabin Industrial Complex, Yangon	Private	06/2018-01/2019	Environmental Management Plan	Manufacturing-Beverage Industry, Environment
45.	Study of Gas Fired Power Plant in Mandalay Region	JICA	05/2018-01/2019	Feasibility Study, Environmental and Social Consideration	Gas fired power plant
46.	Environmental Monitoring Service for Operation of Pre-stressed High-strength concrete pile manufacturing factory in Thilawa SEZ	Private	07/2018-08/2018	Environmental Monitoring	Pile Manufacturing Industry
47.	EIA Study for Construction and Operation of Manufacturing of Steel Strip Galvanizing and Painting Factory in Thilawa SEZ	Private	06/2018-04/2019	Environmental and Social Impact Assessment, Environmental Management Plan, Environmental Monitoring Plan, Public Consultation Meetings	Steel manufacturing industry
48.	Power Distribution Improvement Project in Yangon (Phase I)	Gov. of Myanmar/ Japanese ODA	06/2018-06/2021	Environmental and Social consideration	Electric Power Distribution System including Distribution Substation and Distribution Lines
49.	Consulting Services for Preliminary Environmental and Social Impact Assessment (ESIA) Study for Rice Mill Project, in Thilawa Port and Parcel of Land Adjoining Plot No. 21&22	Private	06/2018-01/2019	Environmental and Social consideration	Rice Mill Operation
50.	Environmental Management Plan (EMP) Study on Garment Factory in Hlaing Thar Yar Industrial Zone in Yangon	Private	07/2018-01/2019	Environmental Management Plan	Garment Industry
51.	Greater Yangon Water Supply Improvement Project Phase II	Gov. of Myanmar/ Japanese ODA	9/2018-8/2026	Environmental and Social consideration	Water Supply
52.	Reviewing EIA Reports, which were submitted to ECD in MONREC, on Development of Cement Plant and Limestone Quarry in Mandalay Region in Myanmar	ECD	10/2018-01/2019	EIA Reports Review	Cement Manufacturing Industry, Mining Industry
53.	Initial Environmental Examination (IEE) Study for Industrial Gas Manufacturing Factory in Thilawa	Private	01/2019-07/2019	Initial Environmental Examination	Gas Manufacturing Industry



No.	Project	Client/ Finance	Period	Services	Sector
54.	Detailed Design, Tender Assistance and Construction Supervision of Drainage Infrastructure Improvements	Gov. of Myanmar/ Japanese ODA	01/2019- 07/2019	Environmental and Social consideration	Drainage
55.	Initial Environmental Examination (IEE) Study for Construction and Operation of Sales, Distribution and Battery Charging of Lead-acid Storage Batteries for Automotive and Household Power Supply Factory in TSEZ	Private	01/2019- 04/2019	Initial Environmental Examination	Battery manufacturing industry
56.	Environmental Impact Assessment (EIA) Study for Development of a Serviced Apartment in Yangon	Private	07/2017- 07/2019	Environmental Impact Assessment	Real Estate Development
57.	Initial Environmental Examination (IEE) Study for Construction and Manufacturing of Emulsion	Private	04/2019- 09/2019	Initial Environmental Examination	Manufacturing of Asphalt
58.	Initial Environmental Examination (IEE) Study for Construction and Manufacturing of Inks	Private	04/2019- 09/2019	Initial Environmental Examination	Manufacturing of Liquid Inks, Offset Inks and Adhesive for film
59.	Initial Environmental Examination (IEE) Study for Construction and Manufacturing of Insecticide Aerosol Products in Thilawa SEZ	Private	06/2019- 12/2019	Initial Environmental Examination	Manufacturing of Insecticide Aerosol Products
60.	Initial Environmental Examination (IEE) Study for Construction and Manufacturing of Energy Drink in Thilawa SEZ	Private	06/2019- 12/2019	Initial Environmental Examination	Manufacturing of Energy Drink
61.	Environmental Impact Assessment (EIA) Study on Zone B Extension and SIMADEV Project Area in Thilawa SEZ	Private	06/2019- 06/2020	Environmental Impact Assessment	Overall Special Economic Zone
62.	Initial Environmental Examination (IEE) Study on the Construction and Operation of Manufacturing of Pharmaceutical Products Factory in Thilawa Special Economic Zone (Zone A) in Myanmar	Private	09/2019- 01/2020	Initial Environmental Examination	Manufacturing of Pharmaceutical Products
63.	Environmental Impact Assessment (EIA) Study on Jetty and Search and Rescue Center in Shan State	Gov. of Myanmar (DWIR)	09/2019- 05/2020	Environmental Impact Assessment	Port Construction
64.	Environmental Impact Assessment (EIA) Study on Greater Yangon Water Supply Improvement Phase II	Gov. of Myanmar/ Japanese ODA	04/2019- 06/2020	Environmental Impact Assessment	Water Supply
65.	Initial Environmental Examination (IEE) Study on Work Procedure & Painting of SKD Vehicle Assembly Factory in Thilawa SEZ in Yangon	Private	09/2019- 03/2020	Initial Environmental Examination	Vehicle Assembly
66.	Environmental Impact Assessment (EIA) Study on Smart and Eco City in Myanmar	Private	09/2019-2021	Environmental Impact Assessment	Smart and Eco City development
67.	Environmental Management Plan (EMP) Study on Port Terminal Operation in Yangon	Private	12/2019- 01/2020	Environmental Management Plan	Port Operations
68.	Environmental Management Plan (EMP) Study on Manufacturing of Beverage in Yangon	Private	01/2020- 05/2020	Environmental Management Plan	Beverage Manufacturing
69.	Environmental Management Policy Basic Study	JICA	03/2020- 06/2020	Environmental Management Plan	Policy
70.	Environmental Safeguard Institutional Strengthening	ADB	01/2020- 06/2020	EIA Review, Capacity Building	Environment, Institutional Development
71.	Environmental Impact Assessment (EIA) Study for Mandalay Beer Factory Phase II	Private	02/2020- 03/2020	Environmental Impact Assessment	Manufacturing Beverage Industry



No.	Project	Client/ Finance	Period	Services	Sector
72.	Environmental Impact Assessment (EIA) Study for new Brewery in Pyinmabin Industrial Zone	Private	02/2020-03/2021	Environmental Impact Assessment	Manufacturing Beverage Industry
73.	Project for Strengthening Environmental Impact Assessment System	JICA	03/2020-03/2021	Technical Assistance	Environment and Social Consideration
74.	Updating Environmental and Safety Management Plan for Waste Treatment Facilities Operation in Thilawa SEZ	Private	05/2020-TBC	Technical Assistance	Solid Waste Treatment Facilities
75.	Environmental Management Plan (EMP) for New Canning Line of Manufacturing Energy Drinks Products Factory in Thilawa Special Economic Zone (Zone B) in Myanmar	Private	07/2020-08/2020	Environmental Management Plan	Manufacturing of Energy Drinks Products
76.	Consultancy Services for supplementary IEE Report preparation for Steel Drum Manufacturing of Lube Oil Factory	Private	09/2020-11/2020	Environmental Impact Assessment	Steel Drum Manufacturing
77.	Technical Assistance on IEE and EIA study review process to ECD	UNDP	11/2020-04/2021	Technical Assistance	Environment and Social Consideration
78.	Consultancy Services on the Water Environment & Effluent Waste Water Standards, Advisory on Establishment of Waste Water Treatment Facilities and Preparation of a Project Proposal	Private	03/2021-08/2021	Environmental Impact Assessment	Garment Industry
79.	EIA Study for Beverage Plant	Private	03/2021-07/2021	Environmental Impact Assessment	Manufacturing Beverage Industry
80.	Strategic Environmental Assessment (SEA) for Solid Waste	JICA	06/2021-11/2021	Strategic Environmental Assessment	Solid Waste
81.	Updating EMP Report for Beverage Manufacturing Company Limited in Zone B, Thilawa SEZ	Private	10/2021-01/2023	Environmental Management Plan	Manufacturing Beverage Industry
82.	Industrial Complex in Yangon Region	Private	Oct/2022-Sep/2023	Environmental Compliance	Infrastructure Development
83.	(JFY2021) EIA Cooperation Promotions Study in Asia	MOEJ	11/2021-03/2022	Environmental Impact Assessment	Cooperation/Promotion
84.	EMP Study for Manufacturer of Garment in Taikkyi, Yangon Region, Myanmar	Private	03/2022-09/2022	Environmental Management Plan	Garment Manufacturing
85.	Strategic Environmental Impact Assessment of Aquaculture	Mercy Corps	06/2022-10/2022	Strategic Environmental Impact Assessment	Aquaculture
86.	ESIA Study for Captive Power Plant (CPP) Project in Thazi	Private	04/2023-01/2024	Environmental & Social Impact Assessment Study	Cement Factory
87.	Service for Environmental Conservation and Prevention Plan ECPP Preparation on the Addition of New Production Line Project in Thilawa Special	Private	01/2024-03/2024	ECPP Plan Preparation	Pharmaceutical Industry
88.	Environmental Management Plan Study on the Operation of the Rubber Sheet Production Factory in Thanbyu Zayat Township, Mon State	Private	03/2024-06/2024	Environmental Management Plan Study	Rubber Industry



Environmental Monitoring

No.	Project	Client/ Finance	Period	Services	Sector
1.	Sampling and Laboratory Analysis for Oil & Grease of Water Quality Analysis	Private	Dec-14	Environmental Analysis	Water Resources, Wastewater, Environment
2.	Environmental Monitoring Service & Operation of Cement Packing Factory in Thilawa SEZ	Private	8/2016-4/2017, 11/2017-03/2018	Environmental Monitoring	Cement Manufacturing Industry
3.	Environmental Monitoring Service on Operation of Audio Electronic Equipment and Products Manufacturing Factory in Thilawa SEZ	Private	08/2017-02/2018, 06/2018-03/2019	Environmental Monitoring	Manufacturing Industry
4.	Consulting Services for Environmental Study for Nyaung-U Airport Rehabilitation and Operation	NK	11/2017-01/2018	Survey, Environmental Monitoring	Transportation, Airport, Environment
5.	Baseline Survey for Construction of a new Brewery factory in Mandalay Region	NK	01/2018-02/2018	Environmental, Flora and Fauna Monitoring	Beverage manufacturing industry
6.	Mercury Survey in Thilawa	Private	Jul-18	Survey, Technical Assistance, Environmental Monitoring	Thilawa SEZ
7.	Environmental Monitoring Service for Construction of Myanmar Cement factory in Thilawa SEZ	Private	04/2018-05/2018	Environmental Monitoring	Cement Manufacturing Industry
8.	Environmental Due Diligence Support and Soil Investigation Survey in Thilawa Special Economic Zone	Private	09/2018-01/2019	Survey, Environmental Monitoring	Development of Industrial Zone in Yangon
9.	Environmental Baseline Survey for Infrastructure Development Project in Yangon Region	Private	10/2018-01/2019	Environmental, Flora and Fauna Monitoring	Infrastructure Development in Yangon
10.	Technical Supporting for Implementation of Environmental Management and Monitoring for Project of Rehabilitation of Thaketa Combined Cycle Power Plant in Yangon	Private	11/2018-07/2019	Environmental Monitoring, Environmental Management	Power Generation Industry
11.	Environmental Monitoring Service for Operation of Concrete Pile Factory in Thilawa SEZ	Private	07/2018-08/2018, 08/2018-09/2018, 12/2018-01/2019,	Environmental Monitoring	Pile Manufacturing Industry
12.	Environmental Monitoring Service for Operation of Industrial Area Zone A and Zone B in Thilawa SEZ	Private	10/2016-ongoing	Environmental Monitoring	Thilawa SEZ
13.	Environmental Monitoring Service for Myingyan Power Plant	Private	06/2019	Environmental Monitoring	Power Plant
14.	Environmental Monitoring Service for Construction of Service Apartment Development Project in Yangon	Private	03/2020-12/2020	Environmental Monitoring, Environmental Management	Construction of Service Apartment



No.	Project	Client/ Finance	Period	Services	Sector
15.	Supporting for implementation of environmental management and environmental monitoring for project of expansion of Yangon port in Thilawa Area Phase I	Private	01/2020-01/2021	Environmental Monitoring, Environmental Management	Port Operations
16.	Environmental Monitoring Service for Operation of Solid Waste Management Facilities in Thilawa SEZ	Private	02/2020-03/2020	Environmental Monitoring	Solid Waste Management
17.	Environmental Monitoring Service for Operation of Fertilizer Factory in Thilawa SEZ	Private	03/2020-04/2020	Environmental Monitoring	Fertilizer Manufacturing Industry
18.	Environmental Monitoring Service for Construction of Offshore Supply Base in Nga Yoke Kaung Bay Area	Private	TBC	Environmental Monitoring	Oil and Gas Industry
19.	Environmental Baseline Survey for Drainage Infrastructure Improvement for the 6 CBD Townships of Yangon	Private	04/2019-05/2019	Environmental Monitoring	Infrastructure Development in Yangon
20.	Water Quality Survey and Flow Rate Measurement for Water Supply in Southern Yangon (Dala)	Private	12/2019-02/2020	Environmental Monitoring	Infrastructure Development in Yangon
21.	Baseline Survey for ESIA/IEE Advisor Project for Myanmar 1250 MW LNG-to- Power Project	Private	05/2020-07/2020	Environmental Monitoring	Power Plant
22.	Environmental Monitoring and Public Consultation Meeting for coffee manufacturer and distributor	Private	08/2020-10/2020	Environmental Monitoring	Coffee Manufacturing Industry
23.	Implementation of Public Disclosure/ Public Consultation Meeting for coffee manufacturer and distributor	Private	08/2020-10/2020	Environmental Monitoring	Coffee Manufacturing Industry
24.	Project for Promotion of Co-benefits Approach on Air Pollution Control in Myanmar	Private	08/2020-03/2021	Environmental Monitoring	Infrastructure Development in Yangon
25.	Implementation of Environmental Monitoring Services in Operation Phase	Private	11/2020-12/2020	Environmental Monitoring	Special Economic Zone
26.	Implementation of Environmental Monitoring Services in Operation Phase	Private	TBC	Environmental Monitoring	Car Manufacturing Industry
27.	Fact-Finding of ambient air quality environment monitoring in East Asia	MOEJ	12/2020-03/2021	Fact Finding	Air Quality
28.	Implementation of Environmental Monitoring Services	Private	02/2021-03/2021	Environmental Monitoring	Solid Waste Management Facility
29.	Implementation of Environmental Monitoring Services	Private	08/2021-09/2021	Environmental Monitoring	Port terminal
30.	Implementation of Environmental Monitoring Services	Private	09/2021-10/2021	Environmental Monitoring	Port/ SEZ
31.	EANET, Low-Cost Sensor for Air Pollution Monitoring in Hybrid Air Monitoring Network Project	MOEJ	11/2021-03/2022	Environmental Monitoring	Air Quality Monitoring
32.	Implementation of Environmental Monitoring Services in Operation Phase	Private	12/2021-02/2022	Environmental Monitoring	Electronic Equipment Manufacturer
33.	Noise and Vibration monitoring	Private	02/2022-03/2022	Environmental Monitoring	Solid Waste Management Facility
34.	Implementation of Environmental Monitoring Services in Operation Phase of automobile industry	Private	02/2022-04/2022	Environmental Monitoring	Car Manufacturing Industry



No.	Project	Client/ Finance	Period	Services	Sector
35.	Support for Implementation of Environmental Management and Environmental Monitoring for Project of Expansion of Yangon Port in Thilawa Area Phase I (FY 2022)	Private	03/2022-03/2023	Environmental Management and Environmental Monitoring	Port/SEZ
36.	Monitoring for Industrial Complex Development Project in Yangon Region	International Organization	06/2022-10/2022	Environmental/ Social Monitoring	Infrastructure Development
37.	EANET Hybrid Air Quality Monitoring Network (HAQMN) Development Project	NK	07/2022-TBC	Environmental Monitoring	Air Quality
38.	Air Quality Monitoring Work for a Rental Factory in Thilawa SEZ Zone A	Private	08/2022-10/2022	Environmental Monitoring	Air Quality
39.	Support For Implementation of Environmental Monitoring Services for a Beverage Factory	Private	11/2022-03/2023	Environmental Monitoring	Beverage manufacturing industry
40.	Environmental Monitoring Service for Operation of Audio Electronic Equipment and Products Manufacturing Factory in Thilawa Special Economic Zone in Myanmar	Private	12/2022-03/2023	Environmental Monitoring	Electronic Equipment Manufacturing Industry
41.	Construction and Operation for Manufacturing of Metallic Coated Steel Strip and Painted Steel Strip in Thilawa SEZ Zone B	Private	12/2022-03/2023	Environmental Monitoring	Steel Manufacturing Industry
42.	Implementation of Environmental Monitoring Services in Chemical Manufacturing Industry	Private	02/2023-04/2023	Environmental Monitoring	Chemical Manufacturing Industry
43.	Implementation of Environmental Monitoring Services in Operation Phase and Support for Preparation of Environmental Monitoring Report of Beverage manufacturing industry in Dagon Seikkan Township	Private	02/2023-06/2023	Environmental Monitoring	Beverage manufacturing industry
44.	Implementation of Environmental Monitoring Work in Thilawa SEZ Zone A	Private	03/2023-06/2023	Environmental Monitoring	Cardboard Manufacturing
45.	Implementation of Environmental Monitoring Work in Thilawa SEZ Zone A	Private	03/2023-06/2023	Environmental Monitoring	Can Packaging Industry
46.	Support for Implementation of Environmental Management and Environmental Monitoring for Project of Expansion of Yangon Port in Thilawa Area Phase I	Private	04/2023-06/2023	Environmental Management and Monitoring	Port/SEZ
47.	Environmental Monitoring Work on the Operation of a Port Terminal in Thilawa, Kyauktan Township, Yangon in Myanmar	Private	09/2023-08/2024	Environmental Monitoring	Port/SEZ
48.	Implementation of Environmental Monitoring Works in Thilawa SEZ Zone A	Private	10/2023-11/2024	Environmental Monitoring	Manufacturing
49.	Air Quality Monitoring at Rental Factory Compound (Rental Factory A,B,C) of Zone A	Private	TBC	Environmental Monitoring	Air Quality Monitoring
50.	"Methodology Study for Development of LCS Hybrid Air Quality Monitoring Network (HAQMN)"	Asia Center for Air Pollution Research Center	05/2023-12/2023	Study	Air Quality Monitoring
51.	Implementation of Environmental Monitoring Service in Thilawa SEZ Zone A	Private	11/2023-11/2023	Environmental Monitoring	Manufacturing
52.	Implementation of 6 Monthly Environmental Monitoring Services and Report for Operation Phase	Private	11/2023-11/2024	Environmental Monitoring	Beverage Manufacturing Industry



No.	Project	Client/ Finance	Period	Services	Sector
53.	Implementation of Environmental Monitoring Work in Thilawa SEZ Zone B	Private	12/2023-06/2024	Environmental Monitoring	Steel Manufacturing Industry
54.	Implementation of Environmental Monitoring Work in Thilawa SEZ in Zone A	Private	02/2024-08/2024	Environmental Monitoring	Insecticides Manufacturing Industry
55.	Environmental Monitoring Program Report Preparation	Private	02/2024-02/2024	Report Preparation	Infrastructure Development in Yangon
56.	WEPA Action Program in Myanmar	IGES	02/2024-03/2024	Technical Assistance	Water Management
57.	Implementation of Environmental Monitoring Work on the Operation of the Rubber Sheet Production Factory in Thanbyuzayat Township, Mon State	Private	03/2024-06/2024	Environmental Monitoring	Rubber Industry



Social Consideration

No.	Project	Client/ Finance	Period	Services	Sector
1.	Survey on Legal System, Institutions and Implementation of Involuntary Resettlement for Thilawa SEZ	JICA	05/2013-03/2015	Social consideration, Technical Assistance	Special Economic Zone
2.	Traffic Survey for Construction of a Serviced Apartment in Yangon	Private	09/2016-10/2016 03/2017-04/2017	Traffic Monitoring and Management	Traffic, Road, Infrastructure
3.	Technical Assistance for Planning and Implementing Income Restoration Program in the Republic of the Union of Myanmar	JICA	09/2016-06/2018	Technical Assistance, Capacity Building	Public Services, Social Infrastructure
4.	Social Consultancy Services for a Port and Port Link Road Project in Mandalay Region	Private/IFC	09/2017-04/2018	Social Considerations, Capacity Building	Transportation, Road, Port, Social Considerations
5.	Study for Gas to Power	NK	12/2017-05/2018	Environment and Social Considerations, Land Survey during Feasibility Study	Power, Energy
6.	Detailed Measurement Survey (DMS) and Socio-economic Survey (SES) for Development of a Hydropower Project in Mandalay Region	Private	01/2019-10/2019	DMS and Socio-economic Survey	Hydro Power Sector
7.	Resettlement Action Plan (RAP) for Greater Yangon Water Supply Improvement Project Phase II	Gov. of Myanmar/ World Bank Loan	02/2019-12/2019	Drone Survey, DMS and Socio-economic Survey	Water Supply
8.	Detailed Measurement Survey (DMS) and Socio-economic Survey (SES) for Development of a Wind Power Project in Magway Region	Private	09/2019-12/2021	DMS and Socio-economic Survey, Land acquisition and Livelihood Restoration Plan	Wind Power
9.	Implementation of Willingness to Pay Survey for Five BOT Highways Toll Roads in Myanmar	Private	12/2019-03/2020	Traffic Monitoring and Management	Traffic, Road, Infrastructure
10.	Detailed Measurement Survey (DMS) and Socio-economic Survey (SES) for Development in Magway Region (Sin ka/Swei Pauk Kan/Zin Taung)	Private	08/2020-10/2020	DMS and Socio-economic Survey, Land acquisition and Livelihood Restoration Plan	Wind Power Sector
11.	Preparation and Implementation of Stakeholder Engagement Plan for Smart and Eco City in Myanmar	Private	10/2020	Stakeholder Engagement Plan	Smart and Eco City development
12.	Advisory Services for Social Considerations of Thang Long Industrial Park II Expansion Project (Phase 3) in Vietnam	NK Vietnam	09/2022-01/2023	Advisory Services	Industrial Park Development
13.	Monitoring Analysis Survey for Establishment of Smart and Eco-Friendly Industrial Park in Thilawa SEZ	NK	10/2022-03/2023	Analysis Survey	Industrial Park Development
14.	Workshop on Environmental and Social Good Practice Guidelines for Rubber Industry	CARE Myanmar	08/2023-10/2023	Capacity development	Rubber Industry
15.	Professional Services for Provision of Technical Assistance to UNDP's projects for Social and Environmental Standards (SES) screening, assessment, management plan and framework	UNDP	12/2023-03/2025	Provision of Technical Assistance	UNDP Social and Environmental Standards



Other Selected Projects

No.	Project	Client/ Finance	Period	Services	Sector
1.	Preparatory Survey on (BOP) Business on Development of Food Supply Chains in Myanmar	JICA	2/2013-6/2014	Preliminary Study, Survey	Agriculture, Agro-Industry, Fishery
2.	Infrastructure Survey for Development Project in Yangon Region	Private	10/2013-3/2014,	Feasibility Study, Social Survey, Due Diligence	Urban development in Yangon Region
3.	Investigation on Energy Sector in Myanmar (Power Generation, Natural Gas, Electricity, Oil & LPG, Environment) (Gas Infra Investigation)	NK	6/2014-8/2014	Study, Survey	Energy, Gas
4.	Project Formulation Study for Mandalay Water Supply Project Utilizing Water from Yeywa Dam	NK	5/2014-6/2014	Technical Advisory, Project Formation	Water Supply, Dam, Hydropower
5.	Infrastructure Investigation for Development Project for Business and Residence Buildings in Yangon	Private	9/2014-11/2014	Study, Survey	Urban Development in Yangon Region
6.	Study for Infrastructure Development for Mining Areas in Myanmar	NK	12/2014-2/2015	Environmental and Social Survey, Due Diligence	Mining Industry
7.	Establishment of the Pilot Model for Regional Tourism Development	JICA	11/2014-3/2017	Technical Cooperation, Pilot Study	Tourism Development
8.	Capacity Development in Basic Water Environment Management and EIA System in Myanmar	NK	6/2015-7/2015	Capacity Development, Wastewater Management, Water	Water Resources
9.	Redevelopment Project in Yangon Region	Private	8/2015-11/2015	Environmental, Social and Health Impact Assessment	Urban Development
10.	Country Study on the EIA System and Implementation in Myanmar	Private	12/2015-1/2016	Due Diligence	Environment, Institutional Development, Public Information
11.	Environmental Law Survey for Food & Beverage Factory	Private	10/2015-12/2015	Due Diligence	Food manufacturing industry
12.	Preparatory Study for the Rehabilitation of Hydropower Stations in Myanmar	JICA	Feb-15	Survey	Energy, Hydropower, Rural Development
13.	Feasibility Survey for Quality Seed Production, Procession and Sales Project attaining Intensive Agriculture in Myanmar	JICA	5/2016-10/2016	Feasibility Study, Initial Environmental Examination, Environmental Impact Assessment	Agriculture, Agro-Industry
14.	ADB: Promoting Ecosystem Services and Forest Carbon Financing in Asia (TA-8564 REG)	ADB	7/2016-3/2017	Technical Assistance, Survey, Mapping, Scoping	Environment, Land Use, Social Infrastructure-Mapping, Agro-Industry, Livestock Industry
15.	Advisory Service for Environmental Management on Establishment of Fertilizer Factory in Thilawa SEZ Zone A	Private	4/2016-6/2016	Technical Advisory to Laboratory	Manufacturing-Metals Industry, Environment



No.	Project	Client/ Finance	Period	Services	Sector
16.	JICA Project for Capacity Development of Power Transmission and Distribution System in The Republic of the Union of Myanmar (Phase I)	Chubu/JICA	6/2016- 11/2018	Human Resource Development Framework, Institutional Development, Capacity Building, Transmission and Distribution Technology Transfer	Transmission & Distribution System
17.	Consulting Service for Management System of Solid Waste Management Facilities Operation (Phase 2)	Private	10/2016- 2/2017	Solid Waste Management, Capacity Building, Technology Transfer, Environmental Management Plan, Environmental Monitoring Plan	Solid Waste Management Facilities in Thilawa SEZ
18.	Updating the Strategic Urban Development Plan of the Greater Yangon	NK/JICA	9/2016- 12/2016	Social Survey, Solid Waste Management Plan	Urban Development, Urban Sanitation, Planning, Environment, Social Infrastructure
19.	Survey for Disseminating Japanese Technologies on Saving Analysis and Improvement by Simplified Energy Measurement in Vietnam	JICA	10/2016- 4/2017	Project Management, Technical Advisory, Technology Transfer	Energy, Planning, Stakeholders Consultation
20.	JICA Project for Capacity Development in Basic Water Environment Management and EIA System	JICA	7/2016- 3/2017	Survey, Capacity Building, Technical Cooperation	Water Resources, Environment
21.	WB East Asia & Pacific (EAP) Comparative Study of the Legal and Institutional Frameworks for Dam Safety and Disaster Resilience	WB	1/2017- 5/2017	Study, Survey, Institutional Development, Capacity Building, Technology Transfer	Water Resources, Dam, Public Services, Capacity Development
22.	Study on Improvement of Power Supply in Thilawa	Private	08/2017- 01/2018	Environment and Social Considerations	Environment and Social Considerations on Power Energy
23.	Support for Establishment of the Laboratory and Preparation of Standard Operation Procedures (SOPs)	Private	09/2017 - 03/2019	Technical Advisory, Capacity Building	Capacity Building, Human Resources Development
24.	NK-GIAS Training at Myanmar Engineering Society (MES), at Yangon Technological University (YTU) and Myanmar Maritime University (MMU)	NK R&D	2014-2020	Capacity Building	GIS
25.	Environmental Impact Assessment Cooperation Project in Myanmar	Institute of Global Environmental Strategies (IGES)	11/2015- 03/2016, 11/2017- 03/2018 09/2018- 03/2019, 06/2019- 03/2020	Technical Assistance, Capacity Building	Environment



No.	Project	Client/ Finance	Period	Services	Sector
26.	Environmental Laws and Regulations Survey for Waste to Energy Project in Yangon	Private	11/2017- 12/2017	Solid Waste Management, Environmental Management Plan, Environmental Monitoring Plan	Energy, Environment, Sewerage, Urban Sanitation
27.	Consultancy Service on Environmental Management for Renovation of Training Facilities for JICA Project for Human Resource Development of Medical Engineering	JICA	05/2018- 10/2018	Environmental Management Plan and Environmental Monitoring	Development of Training Facilities
28.	Preliminary Survey on Biodiversity and Ecosystem Service for Forestry Business in Ayeyarwaddy Division	Private	07/2018- 12/2018	Land Use Management, Social Consideration	Forest, Social
29.	Basic Design of Development of Industrial Area of Zone C in TSEZ	Private	08/2018- 12/2018	Study, Environmental and Social Consideration	Special Economic Zone
30.	Consultancy Service on Environmental Management for Renovation of Training Facilities for JICA Project for Quality Improvement in Technical Vocational Training and Education (TVET) Program	JICA	08/2018- 12/2018	Environmental Management Plan and Environmental Monitoring	Renovation of Training Facilities
31.	Environmental Guidelines Development for the Myanmar Rubber Processing Industry	Private	11/2018- 01/2019	Development of Environmental Guidelines	Rubber manufacturing industry
32.	Urban Development Planning Assistance in Myitkyina and in Waingmaw in Kachin State	JICA	11/2018- 01/2019	Environmental and Social Consideration	Urban Development, Urban Sanitation, Planning, Environment, Social Infrastructure
33.	Water Environment Monitoring in Mandalay	JICA	01/2019- 03/2019	Survey, Capacity Building, Technical Cooperation	Water Resources, Environment
34.	Feasibility Study of Wastewater Business and Wastewater Monitoring Business in Myanmar	Private	11/2018- 01/2019	Survey, Capacity Building, Technical Cooperation	Wastewater Management
35.	Preliminary Survey for Development of Solid Waste Management Master Plan for Greater Yangon Area	MOEJ	01/2019- 03/2020	Preliminary Survey, Study, Capacity Building, Technical Cooperation	Solid Waste Management
36.	Consultancy services for the implementation of the ASEAN Sustainable Development Goals (SDGs) Frontrunner Cities Programme in Myanmar	IGES	03/2019- 09/2020	Technical Cooperation, Awareness Training	Solid Waste Management, Wastewater Management
37.	Project for Capacity Development and Introduction of Pollution Control Management in Mekong Region	Private	07/2019- 07/2019	Capacity Building, Technical Cooperation	Environment
38.	Project on policy dialogue and network building of multi-stakeholders on integrated decentralized domestic wastewater management	Private	07/2019- 07/2020	Technical Cooperation, Awareness Training	Wastewater Management
39.	Solid Waste Management Master Plan in Yangon	NK/JICA	01/2020- 01/2021	Technical Cooperation, Awareness Training	Solid Waste Management



No.	Project	Client/ Finance	Period	Services	Sector
40.	Technical Support Work for the Water Environment Partnership in Asia (WEPA) Action Program in Myanmar which aims to support establishing surface water quality standards including rivers, lakes and marine water	IGES	07/2020-03/2022	Technical support, water quality management	Surface Water
41.	Joint Credit Mechanism Project (2020-21)	NK/MOEJ	08/2018-03/2021	Collecting Information and Cooperation	Climate Change
42.	Survey for Investment Expansion in Myanmar and Cambodia	NK/MAFF	07/2020-03/2021	Survey, Technical Support	Agriculture
43.	Technical Assistance for Institutional Strengthening in Responsible Business and Investment in Myanmar	NK/JICA	10/2021- TBC	Technical Support	Environment
44.	Establishing Integrated Water Resources Management Master Plan for Bago- Sittaung River Basin	NK/JICA	10/2020-11/2020	Master Plan	Water Resources Management
45.	Review on Implementation Status of Environmental and Social Considerations in Projects in Myanmar	NK/JICA	11/2020-01/2021	Review on Implementation of Environment and Social Consideration	Environmental and Social Consideration
46.	Data Collection Survey on Promotion of Environmental Compliance in the Republic of the Union of Myanmar	NK/JICA	01/2021-12/2021	Collecting Information and Cooperation	Air/ Water Quality Management
47.	Preparatory Study on Urban Environment Improvement against COVID-19 in Myanmar	NK	02/2021-06/2021	Study, Technical Support	Urban/ Environment
48.	Survey on Technical Needs on Mercury Management in Myanmar	Private	01/2021-03/2021	Survey, Technical Support	Mercury Management
49.	Environmental and Social Impact Red Flag Study	Private	04/2021-05/2021	Red Flag Study	Wind power
50.	Consulting Services for Verified Carbon Standard, Environmental Management and Safeguard	NK	04/2021-05/2021	Consulting Services	Environmental Management and Safeguard
51.	Study on measures to improve waste management using DX	MOEJ	10/2021-03/2022	Waste management study	Solid waste management
52.	Mainstreaming of Myanmar's NDCs into Private Sector's Sustainability Commitment & Financing	UNDP	11/2021-03/2022	Study and Capacity Building for Private Sectors	Climate Change Mitigation on Energy Sector
53.	Provision of Service for Climate Risk Assessment and Climate and Disaster Resilience Guidance for Climate resilient WASH services for states/regions in Myanmar	UNICEF	01/2022-09/2022	Climate Change Risk Assessment and Climate and Disaster Resilience Guidance on WASH	Water, Sanitation and Hygiene, Climate Change
54.	The Project for The Improvement of Existing EIA Legal System and Procedures, and Capacity Development	NK	05/2022-09/2022	Survey, Technical Support	Legal System and Capacity Development



No.	Project	Client/ Finance	Period	Services	Sector
55.	Due diligence work on 5 beer factories in India for investment decision	NK	06/2022-10/2022	Survey, Technical Support	Beverage manufacturing industry
56.	Procurement of Furniture for Biodiversity Research Center	NK	07/2022-05/2024	Procurement	Furniture
57.	Research for business development and utilization of new technologies in the water environment field (eDNA)	NK	07/2022-07/2023	Research and Development	New Technologies
58.	Conducting two EIA Trainings - "Training on Conducting and Writing Environmental Impact Assessment Reports in Myanmar"	UNDP	07/2022-08/2022	Training modules	Capacity Development
59.	Technical Support Work for the WEPA Action Program in Myanmar which aims to support establishing surface water quality standards including rivers, lakes and marine water	IGES	07/2022-02/2023	Technical support, water quality management	Surface Water
60.	Technical assistance to expedite and improve the development effectiveness of the Chennai Peripheral Ring Road Construction Project (Phase 2)	JICA	09/2022-01/2023	Technical Support	Construction/ Road Development
61.	Remote Sensing and Land Classification Research Services for Study on the Relationship Between Electricity Demand and Land Uses in Myanmar	Private	08/2022-11/2022	Research and Development	Remote Sensing and Land Classification
62.	Environmental Goods and Services (EGS) – Enabling access to off-grid renewable energy and energy efficient solutions and entrepreneurial skills development in Mon State	UNDP	09/2022-01/2023	Development and Services	Off-grid Renewable Energy Sector
63.	Survey on Technical Needs on Mercury Management in Myanmar	Private	09/2022-02/2023	Survey, Technical Support	Mercury Management
64.	Data collection survey on the promotion of solving issues in the global environment field through effective implementation of SME and SDGs business	NK	10/2022-03/2023	Survey, Data collection	SME and SDGs business
65.	Waste Management for cement factories using DX	MOEJ	10/2022-03/2023	Technical Assistance	Waste Management
66.	The survey for international standardization on Green House Gas (GHG) reduction and absorption technology in the agricultural sector (Rice Cultivation)	NK	10/2022-02/2023	Technical Assistance	Agricultural Sector



No.	Project	Client/ Finance	Period	Services	Sector
67.	Supporting work for “Team Environment”, JPRSI (Japan Platform for Redesign: Sustainable Infrastructure)	Overseas Environmental Cooperation Center, Japan	10/2022-03/2023	Training	Awareness Promotion
68.	Implementation of the ASEAN SDGs Frontrunner Cities Programme Phase 2 (SDGs-FC 2) in Yangon, Myanmar.	IGES	12/2023-12/2024	Development Programme	SDGs
69.	Human Rights Due-diligence	NK	06/2023-08/2023	Data Collection	Human Rights
70.	Data collection survey on the promotion of solving issues in the global environment field through effective implementation of Small & Medium Enterprises and SDGs business (Phase 2)	NK	08/2023-12/2023	Data Collection	Small & Medium Enterprises and SDGs business
71.	Private Sector Engagement Specialist	UN-HABITAT	09/2023-03/2024	Technical Assistance	Myanmar Climate Change Alliance 2
72.	Study on Environmental Impact Assessment System in ASIA	NK	11/2021-03/2024	Technical Assistance	EIA System
73.	Data Collection on Environmental Impact Assessment of Flying Cars	NK	06/2023-12/2023	Data Collection	Aviation
74.	Identifying the Restoration Area based on Ecosystem Service (rubber)	WWF	08/2023-12/2023	Consultancy Service	Remote Sensing and GIS and Rubber Industry
75.	Services on the Collection of Hydrogeological Data	NK	10/2023-11/2023	Data Collection	Geographic Information
76.	Independent Evaluation of the Livelihoods and Food Security (LIFT) Fund in Myanmar	UNOPS	11/2023-01/2024	Evaluation	Livelihoods and Food Security (LIFT)
77.	Agricultural Sector GHG Emission Reduction Survey	NK	11/2023-TBC	Survey	Agricultural/ GHG Emission
78.	Study for the introduction of renewable energy	NK	01/2024-02/2024	Data collection	Renewable Energy
79.	Operational Research on Acceptance, Feasibility and Ways for Expansion of Health Care Waste Management and Promotion of Recycling of Recyclable Waste in Private Health Facilities in Myanmar	UNICEF	03/2024-10/2024	Operational Research	Health Care Waste Management



DX	-	Digital Transformation	ADB	-	Asian Development Bank
ASEAN	-	Association of Southeast Asian Nations	NK R&D	-	Nippon Koei Research and Development Center
eDNA	-	Environmental DNA	ECD	-	Environmental Conservation Department
EIA	-	Environmental Impact Assessment	DWIR	-	Directorate of Water Resources and Improvement of River Systems
EMP	-	Environmental Management Plan	Gov.	-	Government
GHG	-	Green House Gases	NK	-	Nippon Koei
GIS	-	Geographic Information System	IFC	-	International Finance Corporation
IEE	-	Initial Environmental Examination	IGES	-	Institute for Global Environmental Studies
NDC	-	Nationally Determined Contributions	JICA	-	Japan International Cooperation Agency
SDGs	-	Sustainable Development Goals	MOEJ	-	Ministry of Environment, Japan
WASH	-	Water, Sanitation and Hygiene	MAFF	-	Ministry of Agriculture, Forestry and Fisheries, Japan
			ODA	-	Official Development Assistance
			TSEZ	-	Thilawa Special Economic Zone
			TSMC	-	Thilawa SEZ Management Committee
			WEPA	-	Water Environmental Partnership in Asia
			UNICEF	-	United Nations Children's Fund
			UNDP	-	United Nations Development Programme
			UNOPS	-	United Nations Office for Project Services
			WWF	-	World Wide Fund

Updated as of March, 2024

Our Services

- Climate Change and Carbon Management
- Environmental & Social Clearance and Due Diligence
- Environmental Measurement Service
- Social Consideration
- Other Services

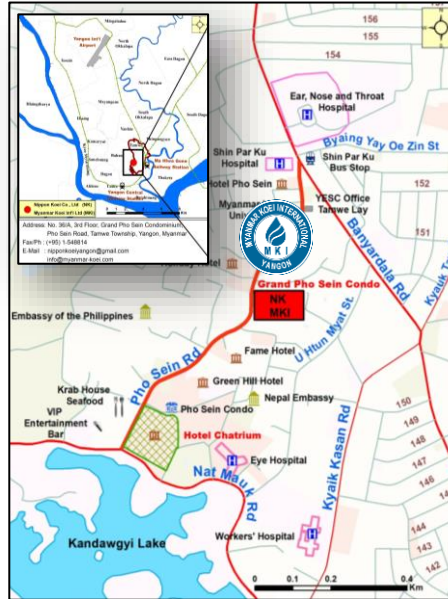
Our Clients

- International donors such as ADB and JICA
- UN agencies such as UN-HABITAT, UNDP, UNICEF and UNOPS
- International/national NGOs such as WWF, Care Myanmar and Mercy Corps
- Private companies



Myanmar Koei International is participating in the UN Global Compact.

Head Office Location



No. 36/A, 3rd Floor, Grand Pho Sein Condominium,
Pho Sein Road, Tamwe Township, Yangon, Myanmar.

Fax/Ph: (+95) 1 548814
www.myanmar-koei.com

Contact Person
Wah Wah Han Su Yin
(+95) 9 510 5867
wahwah@myanmar-koei.com

ENVIRONMENTAL AND SOCIAL CONSULTANCY SERVICES

ENVIRONMENT DEPARTMENT

MYANMAR KOEI INTERNATIONAL LTD.

(MKI)



MYANMAR KOEI INTERNATIONAL LTD.
Consulting Engineers



MKI Environment Department provides environmental and social consideration services by complying with **national environmental conservation law, rule and environmental impact assessment procedures** as well as **international environmental and social sustainability guidelines and good practices** in a wide range of development fields as follows:

- ❖ Infrastructure Development Projects:
 - Transportation: railway, bridge, road, elevated expressway, port and airport
 - Energy: power generation, transmission, distribution, rural electrification and gas pipeline
 - Water Supply: water pipeline and water pumping station
 - Industrial and special economic zone
 - Factories/industries
- ❖ Renewable Energy: solar power/home system, wind power and hydropower
- ❖ Agriculture
- ❖ Aquaculture
- ❖ Rubber
- ❖ Forestry

MKI Environment Department is always client-facing and has an extensive experience in providing international standard environmental and social consultancy services, both in terms of geographical variety and technical application. This breadth also applies to its client base which includes multilateral development banks, bilateral development institutions, international NGOs and the private sector.

Climate Change and Carbon Management

- ❖ Greenhouse gas (GHG) emission calculation
- ❖ Climate change projection
- ❖ Climate change risks assessment
- ❖ Adaptation and mitigation measures planning
- ❖ Renewable energy & energy efficiency
- ❖ Carbon credit-related study

Environmental & Social Clearance and Due Diligence

- ❖ Environmental and social impact assessment (ESIA)
- ❖ Environmental and social management system/plan (ESMS/ESMP)
- ❖ Strategic environmental assessment (SEA)
- ❖ Environmental and social due diligence
- ❖ Occupational health and safety management
- ❖ Hazardous substance management such as asbestos

Environmental Management Service

- ❖ Baseline survey
- ❖ Environmental monitoring and analysis
- ❖ Distributor of RION's acoustics & vibration measuring equipment

Social Consideration

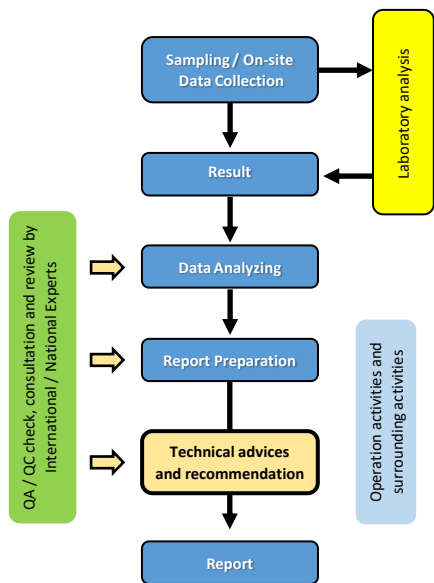
- ❖ Involuntary resettlement and livelihood restoration planning
- ❖ Stakeholder engagement
- ❖ Detailed measurement survey on land acquisition
- ❖ Socio-economic/social survey
- ❖ Gender mainstreaming-related study
- ❖ Humanitarian Assessment

Other Services

- ❖ Solid waste management
- ❖ Biodiversity and ecosystem management
- ❖ Remote sensing, satellite image analysis and GIS
- ❖ Environmental DNA (eDNA) analysis
- ❖ Capacity development & trainings
- ❖ Project evaluation and review
- ❖ Data collection by using AI



QA/QC PROCESS



OFFICE LOCATION



MYANMAR KOEI INTERNATIONAL LTD.
Consulting Engineers

OUR CLIENTS

Japan International Cooperation Agency (JICA)

Investors at Thilawa SEZ Zone A & B

- Myanmar Japan Thilawa Development Limited (MJTD)
- Golden Dowa Eco-System Myanmar Co., Ltd.
- Kalbe Myanmar Co., Ltd.
- Foster Electric (Thilawa) Co., Ltd.
- Suzuki Thilawa Motor Co., Ltd.
- Marubeni Myanmar Fertilizer Co., Ltd.
- Pacific-PSP Syntech Co., Ltd.

Various Clients from Yangon, Mandalay, Bagan, Kyaukse, etc.

- NSKRE Residence (Myanmar) Co., Ltd.
- Yangon Amata Smart and Eco City Ltd.
- Myanmar VB Co., Ltd.
- Sembcorp Myingyan Power Co., Ltd.

CONTACTS OF ENVIRONMENT DEPARTMENT

Myat Witt Yee +95 9 400024405

Ye Tun Oo +95 9 975403883

Email Address:

envmonitoring@myanmar-koei.com

info@myanmar-koei.com



Office Address

Address: No. 36/A, 3rd Floor,
Grand Pho Sein Condominium,
Pho Sein Road, Tamwe Township,
Yangon, Myanmar

Fax/Phone: +95 1 548814

Website: www.myanmar-koei.com

ENVIRONMENTAL SURVEY AND MONITORING SERVICES

- | | |
|----------------------|---------------------|
| Ambient Air Quality | Soil Quality |
| Air (Stack) Emission | River Sediment |
| Indoor Air Quality | Noise and Vibration |
| Water Quality | Traffic Volume |
| Tide Level Survey | Heat Stress |
| Water Flow Rate | Light Intensity |

WE SUPPORT



Myanmar Koei International is participating in the UN Global Compact.



MKI operates in a wide range of fields including the following:

- Dams and Hydropower Development
- Power Generation, Transmission and Distribution, Rural Electrification
- Urban and Regional Development
- Agriculture and Irrigation/Rural Development
- Water Supply and Sewerage/Waste Disposal and Recycling
- Environmental and Social Impact Assessment
- Architectural Design and Buildings and
- Airports, Roads, Bridges, Railways.

MKI ENVIRONMENT DEPARTMENT

The MKI Environment Department has a very broad experience of international environmental consultancy, in terms of both geographical variety and technical application. This breadth also applies to its client base, which includes the multilateral development banks, bilateral development institutions, international NGOs and the private sector.

MKI is a distributor of RION Co., Ltd. for sound and vibration measuring instruments in Myanmar.

OUR SURVEY (BASELINE) AND MONITORING SERVICES

AIR QUALITY

• Ambient Air Quality

Equipment 1 : Haz-Scanner EPAS
Parameters : CO, NO₂, Ozone, SO₂,
PM_{2.5}, PM₁₀
Sampling : 24-hr

Equipment 2 : Horiba AQMS
Parameters : NO₂, Ozone, SO₂, PM_{2.5}, PM₁₀
Sampling : 24-hr

• Air Quality (Emission)

Equipment : Horiba PG-350
Parameters : NO_x, SO₂, CO, CO₂, O₂
Sampling : 1-hr

• VOC (Workplace)

Equipment : Aeroqual Series 500
Parameters : VOC, Temp, Humidity
Sampling : 1-hr

WATER QUALITY

• Surface Water, Ground Water and Discharged Water Quality

Equipment : Horiba Multi Water Quality Checker
Parameters : pH, EC, ORP, DO, TBD + (Lab analysis results)
Sampling : On-site measurement + sample collection

SOIL QUALITY

Equipment : Soil Sampler
Parameters : Soil pH, Humidity + (Lab analysis results)
Sampling : On-site measurement + sample collection

NOISE AND VIBRATION

• Ambient/Baseline Noise and Vibration

Equipment : Noise Level Meter & Vibration Level Meter
Parameters : Noise & Vibration Level
Sampling : 24-hr

• Noise Level at Workplace

Equipment : Noise Level Meter
Parameters : Occupational Noise Level
Sampling : Working Hour

TRAFFIC VOLUME

Equipment : Checklist and Tally
Parameters : Classifications of Vehicle
Sampling : 24-hr

FLOW RATE

• Surface Water Flow Rate

Equipment : JFE Current Meter
Parameters : Flow rate
Sampling : On-site measurement

TIDE LEVEL SURVEY

• Water Level

Equipment : Sounder
Parameters : Water Depth
Sampling : On-site measurement

